

FREE COPY

What To See & Do Guide



Castle Coole
National Trust Fermanagh

**Fermanagh
Lakelands**
NORTHERN IRELAND



MAHONS' HOTEL

IRVINESTOWN | CO. FERMANAGH | NORTHERN IRELAND

You are welcome to Fermanagh and to Mahon's Hotel, established in 1883 and serving meals for over 130 years.

Bar Lunches ~ Meals Served All Day ~ Children's Menu ~ Early Bird Menu, Mon- Sat
Restaurant Open Daily ~ Last Orders 9.30pm

Top Entertainment Every Weekend in Bar
Games Room Carvery Lunch Every Sunday 12 noon - 3pm

Weekend & midweek Breaks
Available from £69.00 p.p.s



Coming by boat? We'll lift you at Castle Archdale

Tel: +44 (0)28 6862 1656 | Fax: +44 (0)28 6862 8344 | www.mahonhotels.co.uk

or call in and sample 'Real Fermanagh Hospitality'



Discover the beauty of the Fermanagh Lakelands on board the Lady of the Lake Luxury Cruiser. The Lady of the Lake Cruiser is a spacious luxury double deck air conditioned pleasure cruiser and is available for private hire and is the ultimate venue to celebrate any occasion. Advanced Booking recommended and all sailings are subject T&C's



For further details and bookings: T: 028 6862 2200
E: info@ladyofthelaketours.com
www.ladyofthelaketours.com
GUIDED CRUISES: Every Saturday at 11.30am,
Daily Sailings in July & August Sun-Fri at 11.30am
SUNSET DINNER CRUISES: from June - September



MANOR HOUSE
COUNTRY HOTEL



AA Hotel of the Year Northern Ireland 2016 / 2017



Killadeas, County Fermanagh.

T: +44 (0)28 6862 2200
www.manorhousecountryhotel.com

Ulster Teller's Hotel of the Year 2015 | Hospitality Ulster's Hotel Bar of the Year 2015
Luxury Travel Guide Northern Ireland's Luxury Hotel of the Year 2016

k KILLYHEVLIN LAKESIDE HOTEL & LODGES



ESCAPE TO THE LUXURY KILLYHEVLIN LAKESIDE HOTEL

- Award Winning Lakeside Hotel
- 71 Spacious Rooms
- 14 Lakeside Lodges
- Health Club & Elemis Spa



Tel: +44(0)28 6632 3481
Email: info@killyhevlín.com

www.killyhevlín.com



	Page
Welcome	2
Marble Arch Caves Global Geopark	4
Boating	13
- Boat Trips & Day Boat Hire	14
- Cruising, Marinas & Boat Services	16
Visitor Attractions	19
Genealogy	26
Arts & Crafts	31
Activities For All	34
- Activity Centres	34
- Angling	38
- Golfing	40
- Canoeing	42
- Karting	42
- Air Activities	43
- Equestrian	43
- Entertainment	44
- Cycling & Walking	46
- Spa & Yoga Breaks	48
- Health & Fitness	50
Shopping	51
Eating Out	54
Tourist Services	65
Transport	68



Fermanagh & Omagh
District Council
Comhairle Ceantair
Fhear Manach agus na hOmaí



Welcome to the Fermanagh Lakelands

A visitor's paradise and home to some of Ireland's natural wonders

With fresh air and green fields in abundance, teamed with quality accommodation and plenty to see and do, Fermanagh is the perfect destination to make memories that will last forever.

For those of you who just want to spend some time in our glorious county taking in the sites on foot, by bicycle or car, the county is steeped in history and heritage sites which are off the beaten track giving you time to explore the traditions that lie within. From castles to pre-historic monuments and mountain tombs this magical county is

just waiting to be discovered. Scenic routes through lake shore countryside and rugged mountain terrains offer walking and cycling enthusiasts the perfect way to see the natural Irish countryside at its best. Not known for its busy roads or bustling sidewalks, when visiting Fermanagh the easy going way of the local people gives visitors the chance to mingle and get an insight into the Irish way of life. The warm welcome that Irish people are renowned has not escaped our Lakeland County! One of the best ways to explore the Lakelands is definitely by water.

Fermanagh Lakelands is the perfect environment for a boating holiday. With several on shore boat hire companies no specialist knowledge is required, just a good sense of adventure! This is the perfect way to explore the waters of Lough Erne and the surrounding Fermanagh countryside.

Or if you'd prefer a more relaxing way to experience the beauty of the area then hop aboard a guided boat tour. All you have to do is sit back and relax while the insightful guide's commentary brings life to the picturesque landscape and

historic monuments which can be seen. Because of the vast expanse of water Fermanagh Lakelands is a perfect location for all sorts of water sports. Fermanagh has a number of top-class activity centres accommodating groups,

families and children which offer summer programmes and activities at great value. With so many wonderful scenic routes and viewpoints Fermanagh is picture perfect – take your memories back home to show your friends by

capturing the beauty of the Lakelands on camera or canvas.

So whether you're an activity enthusiast with an urge to find a new adrenaline rush or someone who prefers a relaxing trip down the lake – it's all here.



EXPERIENCE
LUXURY
IN NORTH WEST IRELAND

Lough Erne Resort is a must when in the Fermanagh Lakelands with two championship golf courses, an authentic Thai Spa and 3AA Rosette Catalina Restaurant.

 T: +44 (0) 28 6634 5766
 loughernerestort.com

 **LVX**
Signature
EXCELLENCE IN SERVICE

 10 YEARS

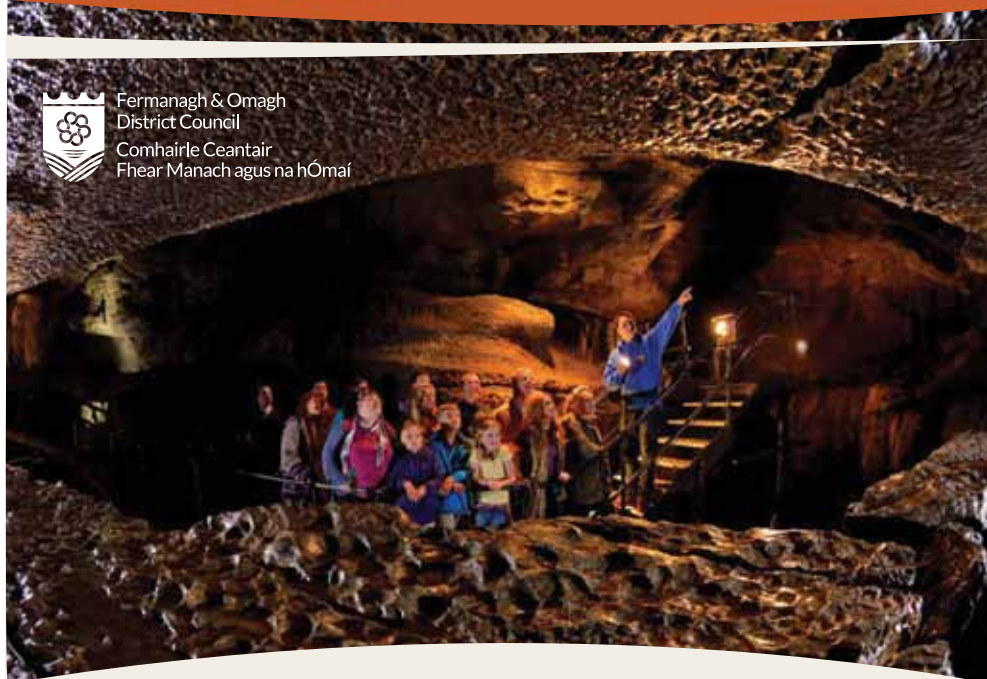
 LOUGH ERNE
RESORT



Marble Arch Caves Global Geopark



Fermanagh & Omagh
District Council
Comhairle Ceantair
Fhear Manach agus na hÓmaí



A truly unique and awe inspiring experience awaits you

This award winning tourist attraction is a must on any visitor 'to do' list.

A guided 75 minute walk through one of Europe's most exquisite show caves is a must see!

Exhibition Area

Souvenir Shop

Free Audio-Visual Presentation

Coach & Car Parking

Education Service

Events Programme

Restaurant

Free Wi-Fi

Marble Arch Caves Global Geopark

43 Marlbank Road | Legnabrocky | Florencecourt

County Fermanagh | N. Ireland | BT92 1EW

Tel: +44 (0) 28 6634 8855

Email: mac@fermanaghomagh.com

Web: www.marblearchcavesgeopark.com

Guided tours of Marble Arch Caves are offered daily from Mid March - End of September.

Visitors are advised to telephone before setting out in poor weather conditions.

Advance booking by telephone is strongly recommended.



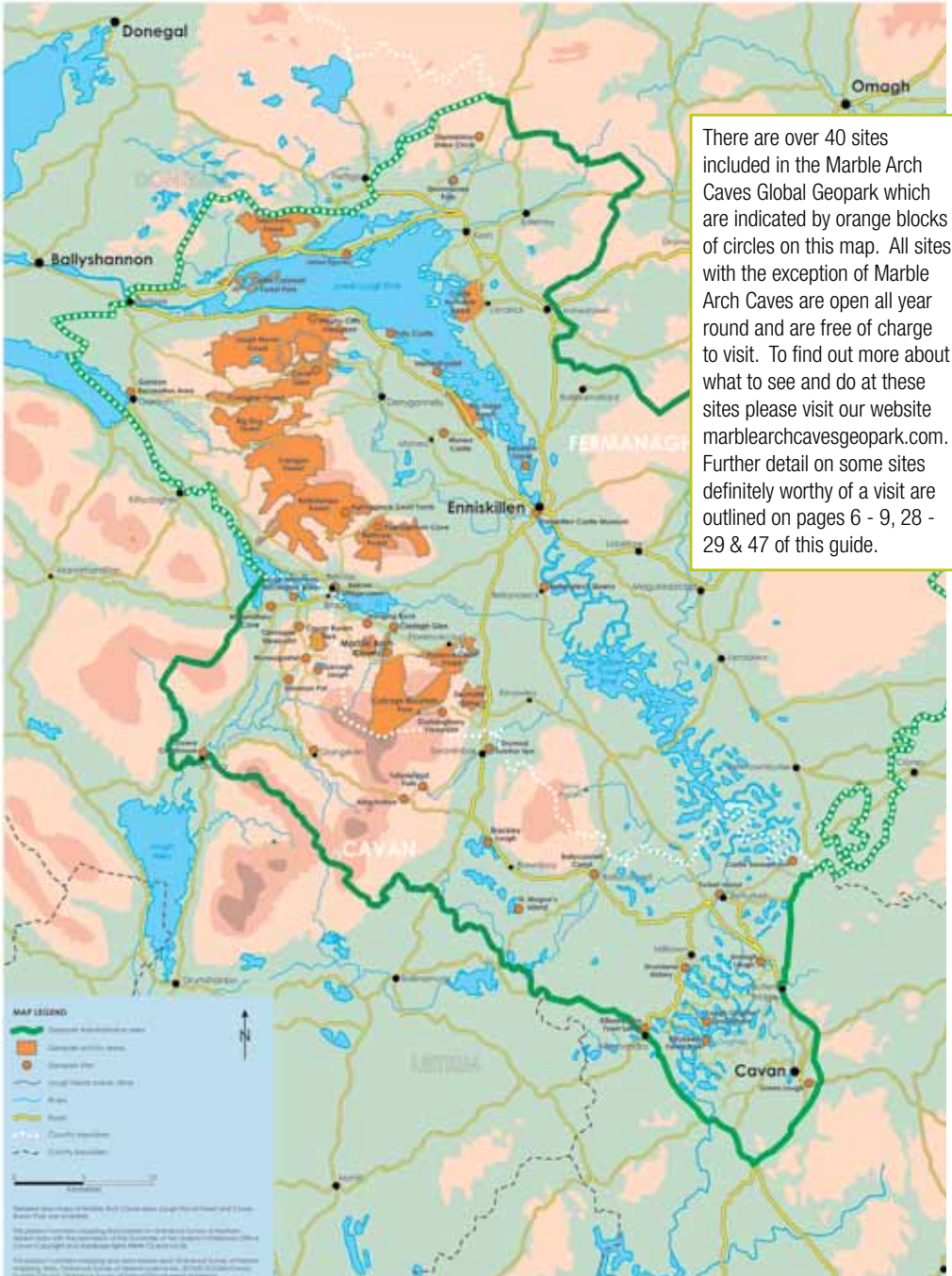
United Nations
Educational, Scientific and
Cultural Organization



Marble Arch Caves
UNESCO
Global Geopark

There are many other sites and trails open in the Geopark all year round. For more information on these please visit pages 4 - 9, 28 - 29 & 47 of this guide.

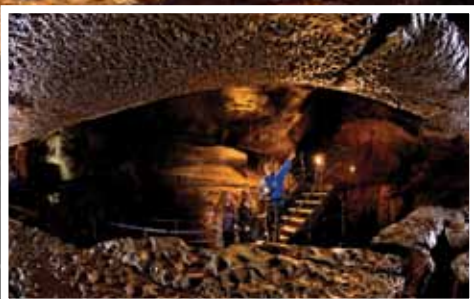
Marble Arch Caves Global Geopark



There are over 40 sites included in the Marble Arch Caves Global Geopark which are indicated by orange blocks or circles on this map. All sites, with the exception of Marble Arch Caves are open all year round and are free of charge to visit. To find out more about what to see and do at these sites please visit our website marblearchcavesgeopark.com. Further detail on some sites definitely worthy of a visit are outlined on pages 6 - 9, 28 - 29 & 47 of this guide.



Marble Arch Caves Global Geopark



Marble Arch Caves Global Geopark is located in the rugged mountainous uplands and gently rolling lowlands of Counties Fermanagh and Cavan. Taking in the world famous Marble Arch Caves, the Geopark contains some of the finest natural landscapes on the island of Ireland and offers a window into the areas 895 million year past.

The Marble Arch Caves Global Geopark was one of the first eight Geoparks to be recognised in the world by UNESCO (the United Nations Educational Scientific and Cultural Organisation) when they launched their Geoparks initiative in 2001.

Since then, the Geopark has gone through a number of phases of expansion and in 2008, the Geopark was expanded into the public lands in West Fermanagh and West Cavan, making it the first cross border Geopark anywhere in the world. Today, the Marble Arch Caves Global Geopark is one of the biggest Geoparks in the world.

What is a Geopark?

Marble Arch Caves Global Geopark is one of a growing network of Global Geoparks around the world. UNESCO Global Geoparks are regions with geology of outstanding international significance. Focusing on conservation,

education and geotourism, UNESCO Global Geoparks help local communities and visitors to celebrate the links between the unique geology of their areas and its natural, historical and cultural heritage.

Their purpose is not just to conserve the environment but also to encourage its enjoyment and understanding by the public through sustainable tourism. UNESCO Global Geoparks engage with local communities, develop educational programmes, work with academic institutions and function as active laboratories for the highest levels of research.

Exploring the Global Geopark

Within the Geopark, there's plenty to suit all ages and abilities; whether you fancy a quiet stroll on a leafy woodland path or a strenuous hike over high hills, or if you're a dedicated cave explorer or an intrepid rock climber, a novice canoeist or an expert bird watcher – there is something for everyone.

Marble Arch Caves, one of Europe's finest showcaves are a must on your Geopark to-do list but there are many other fantastic places to explore. Stand at one of Ireland's best viewpoints at the Magho Cliffs in the Lough Navar Forest or discover the pre-historic monuments in the Cavan Burren Park. Why not take time to stroll along the shores of Lough Erne at Castle Caldwell or to see the source of Ireland's mighty River Shannon where it wells up from deep, hidden caves at the Shannon Pot.





Marble Arch Caves Global Geopark

Co. Fermanagh

Cuilcagh Mountain Park

Cuilcagh Mountain Park is an area on the northern slopes of Cuilcagh Mountain which was formed in 1998. At 665m, the highest point in Fermanagh, Cuilcagh Mountain with its distinctive table-top profile forms a natural focal point of an area rich in geology, archaeology, folklore, history and wildlife. The mountain itself is

topped by gritstone, which is exposed in places as dramatic cliffs, which sweep down to lower sandstone and shale slopes. The middle slopes of Cuilcagh Mountain are covered with a thick layer of peat forming one of the best examples of a blanket bog ecosystem in the north of Ireland. The lower slopes of Cuilcagh are limestone

with a karst landscape and complex cave systems. There are opportunities for visitors to enjoy a gentle stroll or, for the more adventurous, there is a challenging walk to the summit where some truly splendid views of Fermanagh, Cavan and the bordering counties can be encountered.

Co. Fermanagh

Lough Navar Forest

Lough Navar Forest is a spectacular forest extending across 2,600 hectares of bog, heath woodland and open water. Most of the forest is dominated by coniferous woodland. The area has a rich natural, geological and archaeological heritage. The forest boasts a network of walking paths and

trails of varying lengths. A 7 mile long scenic drive enables visitors to explore this spectacular forest by car. The jewel of the forest is undoubtedly the Magho Cliffs viewpoint where the views are breathtaking. On a clear day, Lower Lough Erne, the Sperrin Mountains, Slieve League, the Atlantic Ocean

and the Blue Stack Mountains can be seen. **Correl Glen National Nature Reserve** at the entrance to the Forest is also worth a visit. Toilet facilities are located at the bottom of the Magho Cliffs along the A34 Enniskillen to Belleek Shore Road.

Co. Fermanagh

Ely Lodge Forest

Ely Lodge Forest is located approximately 6 miles north west of Enniskillen on the shores of Lower Lough Erne. The forest extends over 250 hectares and is a delightful mixture of both native deciduous and coniferous tree species. The forest

is rich in wildlife and is steeped in a history dating back to the 17th century. An intricate network of waymarked walking routes, including routes which are fully wheelchair and pushchair accessible, are present within the forest enabling this scenic woodland

to be fully explored. Fishing stands and jetties, picnic areas and car parking facilities are also available. A visit to the Carrickreagh viewpoint is a must with its spectacular panoramic views over Lower Lough Erne and its islands.

An on-going programme of events takes place in the Geopark, where people can explore our landscapes and enjoy the wonders of the natural environment. Fossil fun days, heritage trails, guided walks and scavenger hunts are examples of some of the activities taking place in the Geopark. The Geopark offers a comprehensive



education programme throughout the year based at the Marble Arch Caves Visitor Centre. Curriculum linked programmes are offered for primary, post-primary and tertiary levels. Geopark staff members also carry out visits to schools and organise special educational events at various times throughout the year.

For more information about the Marble Arch Caves Global Geopark or to book a guided tour of Marble Arch Caves please contact:

Marble Arch Caves Global Geopark

43 Marlbank Road
Legnabrocky
Florencecourt
County Fermanagh


Northern Ireland
BT92 1EW

T: +44 (0)28 6634 8855

E: info@marblearchcavesgeopark.com

www.marblearchcavesgeopark.com

 #MarbleArchCavesGlobalGeopark

 @macgeopark

Co. Fermanagh

Castle Archdale Forest

Castle Archdale Forest is a 520 hectare mixed broadleaved and coniferous lowland forest located on the shores of Lower Lough Erne. There is a network of car parks, picnic sites, walks, family cycle trails, fishing jetties and viewpoints throughout the forest. The forest is a richly varied with views, features and includes ruined

Castles, WWII docks & buildings, ancient woodland, millennium forest and views over Lower Lough Erne to White Island, Davy's Island and further afield. Other attractions that may tempt visitors is the adjoining Castle Archdale Country Park including a marina, camping, caravan and mobile home facilities, public toilets and café.

Co. Fermanagh

Castle Caldwell Forest

Castle Caldwell Forest is a 200 hectare forest located on a peninsula on the northern shore of Lower Lough Erne. It's a birdwatcher's paradise with many of the islands managed and monitored by the Royal Society for the Protection of Birds. There are many waymarked walking trails

of varying length within the forest passing spectacular features such as Castle Caldwell, the intriguing Fiddler's Stone, an impressive limestone kiln and an unusual half-moon limestone bench. Facilities on-site include car parking, interpretation, bird hides, boat jetty and picnic facilities.

Co. Cavan

Cavan Burren Park

Cavan Burren Park is a unique landscape of geological and archaeological features in an open setting. Whether it's Cavan Burren's wide open landscapes, fascinating visitor centre, the perfectly preserved boulders shaped by ice, spectacular

prehistoric graves, bog-bridge walking trails, limestone pavement - a visit to Cavan Burren Park is an opportunity to experience a vast world of natural and man-made history. An exhibition area and public toilets are located in the car park.

Classic Fishing Festival Fermanagh 2017



Lough Erne, Co. Fermanagh
8th May - 12th May, 2017

Organised by



Fermanagh & Omagh
District Council
Comhairle Ceantair
Fhear Manach agus na hÓmaí

In conjunction with



Department of
Agriculture, Environment
and Rural Affairs
Inland Fisheries

£5000
TOP
PRIZE



ULSTER & IRISH OPEN SHORT
CIRCUIT CHAMPIONSHIP EVENT

Enniskillen Airport



Sat 7th October 2017

The Enniskillen 100 is organised by
Enniskillen and District M.C.C &
Cookstown and District M.C.C and
sponsored by Fermanagh and
Omagh District Council.



Fermanagh & Omagh
District Council
Comhairle Ceantair
Fhear Manach agus na hÓmaí





FERMANAGH ENDURANCE ADVENTURE RACE

Saturday 07 October, 2017

Cycling, Trail Running & Kayaking

Registration opening soon at
www.FEARmanagh.com

***Short Race 35 kms
Long Race 74 kms***



Also includes
Emergency Services Trophy
See website for details
www.FEARmanagh.com



Fermanagh & Omagh
District Council
Comhairle Ceantair
Fhear Manach agus na hÓmaí

[028] 6632 2882
www.ernetours.com

facebook / Erne Tours Limited | twitter / Erne Tours Ltd

erne tours



Cruise Lough Erne under cover of glass and forget the weather. Relax and enjoy the panoramic view while the crew give a live commentary. The M.V. Kestrel is a 56 seater, fully glazed traditional waterbus, with on-board facilities including provision of hot and cold drinks, snacks, a licensed bar and toilet facilities.

Discover the mysteries of Devenish Island Monastic Site on beautiful Lough Erne

Devenish is an L-Shaped island of 70 acres at the South end of Lower Lough Erne, 1-½ miles downstream from Enniskillen. The monastic site occupies a hill slope at the South East tip of the island.

This is one of a chain of Island monasteries in both Upper and Lower Lough Erne. Devenish was an important port of call on one of Early Christian Ireland's major highways.

Of course, the best way to discover Devenish Island is aboard one of our regular cruises.



ernetours.com • Tel: 028 6632 2882

Boat Trips & Day Boat Hire



Enniskillen ERNE TOURS

Main A46 Belleek-Enniskillen Road | Erne Tours | Brook Park | Enniskillen | BT74 7EU
T: +44 (0) 28 6632 2882 E: info@ernetours.com | www.ernetours.com



56-seater waterbus departs from the Round 'O' Jetty, Brook Park. Guided tours available Easter to the end of September on a regular basis for public and coach/private parties.

Public tours last 1 hour 45 minutes and include a visit to Devenish Island Monastic site. Shop/Bar/toilets onboard. Saturday evening May-Sept, Public Dinner Cruise to the Killyhevlin Hotel 2 hour cruise/3 course dinner (prices all inclusive). Private standard/lunch/dinner cruises by arrangement.

Public Sailing Times: Easter/May | Bank Holiday- Special Sailings

May & Sept – Tues, Sat, Sun, 2.15pm |

June - Daily 2.15pm (4.15pm) No.'s Permitting

July & August Daily: 10.30, 12.15, 2.15, 4.15.

Pay on board (Booking possible for groups of 10 or more) Coffee shop available at the park, open daily.

Also At Brook Park



Prices available on our website: www.ernetours.com

Belle Isle Estate MV Trasna

Belle Isle Estate | Lisbellaw | Operated by Erne Tours | Brook Park | Enniskillen | BT74 7EU
T: +44 (0) 28 6632 2882 E: info@ernetours.com | www.ernetours.com



Designed and built for Fermanagh waters by G L Watson & Co., Glasgow in 1974 for the 5th Duke of Westminster. MV Trasna is a beautiful, classic, clipper style wooden motor yacht and is one of the finest traditional yachts in Ireland. The vessel is 54 ft in length and can accommodate sixteen passengers in comfort. It sports a splendid figurehead on her bow, a golden sheaf of wheat incorporating the Grosvenor crest. Currently owned by The Duke Of Abercorn and moored at Belle Isle Estate, Lisbellaw. Available for private hire from April to October. Catering onboard can be arranged. Suitable for private parties, weddings, corporate events. **Bookings can be made through Erne Tours.**

Boat Trips

Enniskillen DEVENISH ISLAND



Founded in the 6th century by St Molaise and today visitors can view extensive ruins including a 12th Century Round Tower, Augustinian Abbey, St Molaise's House and a graveyard with an unusual mid 15th Century carved cross.

- Public Tours available with Erne Tours (+44(0)28 6632 2882) – see Page 13
- Private Tours available with Erne Water Taxi (+44(0) 77 1977 0588) – see below.

Killadeas LADY OF THE LAKE CRUISER



Bookings Recommended. All sailings subject to minimum numbers and weather conditions.
T: +44 (0) 28 6862 2200 E: info@ladyofthelaketours.com www.ladyofthelaketours.com

Moored at the Inishclare Jetty, Killadeas, just outside of Enniskillen and minutes from the Manor House Country Hotel, the Lady of the Lake Cruiser is a spacious luxury double deck air conditioned pleasure cruiser. The ultimate venue to celebrate Engagements, Weddings, Birthdays, Special Occasions as well as Corporate Events and Conferences (56 people).

Enjoy the beauty of the Fermanagh Lakelands on-board with a wide range of catering options available such as 4 course Lunch/Dinner (38 people) or a satisfying Hot/Cold Buffet. Sailings from Enniskillen and surrounding the Lough Erne can be organised. PUBLIC CRUISES: Every Saturday at 11.30am, Daily Sailings in July & August at 11.30am. SUNSET DINNER CRUISES: from June – Sept. Advanced Booking recommended and all sailings subject to weather conditions and minimum numbers.

Lisnaskea THE INISHCRUISER



Share Discovery Village | 221 Lisnaskea Rd | Shanaghy | Lisnaskea | BT92 0JZ
T: +44 (0) 28 6772 2122 reception@sharevillage.org www.sharevillage.org

The open air viewing deck is a great way to absorb the beauty of Upper Lough Erne. Public cruises available Easter-September, every Sunday & Bank holidays 10.30am. The 57 seater luxury, heated cruiser is complete with fully licensed bar. Sunday's in July & August the Inishcruiser will go out at 10.30 am and 2.30pm. Group Cruises with Afternoon Tea onboard or Cruises partnered with Crom Castle are also available, contact SHARE for more information.

Prices available on our website. Discounted advanced booking available online.

Castle Archdale WHITE ISLAND



Castle Archdale Marina | Lisnarrick | BT94 1PP (10 miles from Enniskillen on the B82 Kesh Road)
T: +44 (0) 28 6862 1892 | +44(0)28 6862 1156 / +44(0)75 90632728 | info@drumhoneyholidaypark.com

White Island is located on Lower Lough Erne situated in Castle Archdale Bay off the east shore of Lower Lough Erne. On the island are the ruins of a 12th-century church and 8 archaic carved stone figures dating back to the 6th century. The White Island Ferry Service operates daily in July & August, over Easter & May Bank Holidays - £4 per person. Tour time approx. 1 hour. Additional tours can be arranged for groups. Contact numbers above for sailing times.

Enniskillen ERNE WATER TAXIS



Enniskillen
T: +44 (0) 77 1977 0588 info@ernewatertaxi.com | www.ernewatertaxi.com

See Lough Erne your way with Erne Water Taxi's chauffeur driven boats. Travel in the comfort of our covered 8- seater boat, complete with cab, without having to worry about the driving. Your tour guide will help you explore the history of Lough Erne. Leaving from Enniskillen at the side of Fermanagh Lakeland Forum Leisure Centre, pick up and drop off can also be arranged from any accessible jetty on Lough Erne. Costs dependant on the length of the journey, see website. 1.5 hour tours from £15pp. Services Available March – October.

Water Taxi's Service

1.5 Hour Tour	Half Day Tour	Full Day Tour	Bespoke tours by request.
---------------	---------------	---------------	---------------------------

Day Boat Hire

Castle Archdale CASTLE ARCHDALE MARINA



Lisnarick | Irvinestown | Co. Fermanagh
T: +44 (0) 28 6862 1156 T: +44 (0) 28 6862 1892 www.castlearchdaleboathire.com

Boats available for half & full day hire. Also cycles, pedal carts & fishing rod hire. Prices for boat hire includes fuel chart and buoyancy aids.

8 Person Day Boat - Half Day and Full Day Hire: Visit our website or call for rates.
6 Person Day Boat - Half Day and Full Day Hire: Visit our website or call for rates.
Opening Times: Peak season: Mon- Sun: 9.00am-6.00pm - off-peak Weekends - 10am - 6pm.

Enniskillen ERNE BOAT HIRE LTD



Regal Pass Jetty | Enniskillen | County Fermanagh | BT74 7BL
T: +44 (0) 7523 423 232 M: +44 (0) 7523 423 232 E: erneboathire@icloud.com

Boats are available all year round and can be booked via mobile phone, Facebook or by email. Erne Boat Hire is a family run business with purpose built boats for the rental market. Our self drive boats comfortably hold six adults. Buoyancy aids and fuel is provided and if required tuition can be given to inexperienced boaters. Devenish Island is approximately 30 minutes travel time. Ardowen Theatre and Killyhelvin Hotel are approximately 20 minutes travel time. The boats are an ideal way to view the wildlife of beautiful Lough Erne or to take in the historical sites of Enniskillen and the surrounding area.

Killadeas MANOR HOUSE MARINE DAY BOATS



Killadeas | County Fermanagh | BT94 1NY
T: +44 (0) 28 6862 8100 E: info@manormarine.com www.manormarine.com

BOAT HIRE! NO EXPERIENCE REQUIRED! Price includes: tuition, fuel, navigation map, buoyancy aids. Enjoy a day cruising Lough Erne, relax and fish or take a picnic and visit one of the many islands such as Devenish Island or White Island. Prices start from £65

8 person & 6 person boat hire available. Visit our website or call for rates.



Great for
Small Groups
& Families

FOR BOOKINGS CALL:
0044 77 1977 0588

Explore The Best Of Lough Erne

www.ernewater taxi.com







Cruising, Marinas & Boat Services



ERNE CHARTER BOAT ASSOCIATION (ECBA)

T: +44 (0) 28 66323110 www.boat-holidays.info



This association has developed its own code of practice and strict regulations to which all craft available for hire must comply, ensuring each customer hires a safe, well serviced boat which is equipped to the highest standards. The member companies are located along the Erne Waterway. No driving licence is needed. Upon arrival at the marina of your choice, you will be given thorough instructions on the handling of your cruiser before you set off. Ample crockery, cutlery, cooking utensils and tea towels all included. All craft are fitted with electric lights, piped drinking water, hot and cold water supply, refrigerator, heating and marine flush WC. sleeping bag/duvet with sheets, pillows, blanket and hand towel are provided for each crew member. Compass, binoculars, navigation chart and instruction booklet, anchor, 2 mooring lines, boat hook, first aid kit, lifebelt, buoyancy aids all supplied. Fuel tanks are full at start of cruise - just pay for what you use. Food provisions can be ordered in advance. All cruiser companies provide road transfers to and from all Irish airports or other arrival destinations.

Irvinestown (ECBA Member) AGHINVER BOAT COMPANY

Aghinver | Irvinestown | Co. Fermanagh | BT94 1JY
T: +44 (0) 28 686 31400 E: info@abcboats.com www.abcboats.com



Third generation family owned boat Charter Company on Lower Lough Erne with over 40 years experience. The most modern fleet in Ireland, we pride ourselves on personal service, guaranteed.

Bellanaleck (ECBA Member) CARRICK CRAFT

The Moorings | Bellanaleck | BT92 2BA | T: +44 (0) 28 3834 4993 | F: +44 (0) 28 3755 1806
E: sales@carrickcraft.com www.cruise-ireland.com



• 2/4 berth from £485 per week • 4/6 berth from £844 per week • 6/8 berth from £1178 per week
Cruise Ireland - The magic of Ireland's Waterways. Ireland's leading Cruiser-Hire Company offer the best in boating holidays on the Erne, Shannon and Shannon-Erne Waterways. Boats of all sizes available which are fully equipped to ensure your comfort on board. No experience necessary as all tuition and demonstrations will be provided. Choice of 3 start marinas on Lough Erne and the River Shannon.

Killadeas (ECBA Member) MANOR HOUSE MARINE & COTTAGES

Lough Erne · Killadeas

T: +44 (0) 28 6862 8100 E: info@manormarine.com www.manormarine.com



Boat holiday prices:

- ▶ 2/4 berth from £575pw ▶ 4/6 berth from £765pw ▶ 6/8 berth from £1195pw
- ▶ Day boats - Prices start from £65

Our fleet is one of the most modern in Ireland, all exclusively designed for us and equipped to offer you a boating holiday of a life time. NO EXPERIENCE OR LICENCE REQUIRED. FULL TUITION GIVEN. 6 miles from Enniskillen. Day boats also for hire - Half Day (4 hr) & Full Day (8 hrs)

Ballinamore RIVERSDALE BARGE HOLIDAYS & BOAT BUILDING

Ballinamore · County Leitrim T: 00 353 (0) 7196 44122

E: info@riversdaleholidays.com www.riversdaleholidays.com



Riversdale Barge Holidays & Boatbuilding are based on the Shannon Erne Waterway. Our fleet consists of wide beam barges that are of a traditional design which gives greater living space and comfort to the holiday maker.

Our barges are furnished with log burning stoves and fully equipped galleys. It allows you to navigate the Irish Inland waterways, the Shannon Erne Waterway, The Shannon River and Lough Erne and gives you the total holiday experience that you want from Fermanagh's beautiful Lakelands.

Barging the Fermanagh Lakelands: Prunella Scales and Timothy West

Derrylin CORRAQUILL CRUISING

Drumetta · Aghalane · Derrylin · Co Fermanagh BT92 9FT T: +44 (0) 28 6774 8712

E: info@corraquill-cruising.com www.corraquill-cruising.com



- ▶ Low Season - from £760 ▶ Mid Season - from £890 ▶ High Season - from £1095
- ▶ W/end breaks available from £330

We are a privately run business operating fully equipped traditional Dutch Barges designed for all weather cruising. A transfer service from air and sea ports is available. We are friendly and flexible to ensure you have a memorable holiday.

Kesh LAKELAND MARINE

Muckcross · Kesh · BT93 1TZ T: +44 (0) 28 6863 1414

F: +44 (0) 28 6863 1960 E: andy@lakeland-marine.co.uk www.lakeland-marine.co.uk

120 Berth Marina situated in Muckcross Bay at Lower Lough Erne. Retailers of O'Brien & O'Neill watersports equipment and Bolle Eye Wear. All marine engine repairs and marina services. Long and short term private and public berthing.

Carrybridge TOM LEONARD MARINE

Crawford's Marina · Carrybridge · Lisbellaw · Co. Fermanagh · BT94 5NF

T: +44 (0) 28 6638 7806 E: info@tomleonardmarine.com www.tomleonardmarine.com

Our moorings are located over two sites, Carrybridge and Bellanaleck. Both marinas have floating jetties, running water, shore power, security cameras and secure parking. The repair center is located at the Carrybridge site, however we also offer a mobile repair service over all of Lough Erne. Onsite facilities include lifting up to 30 tonne, hardstand storage, servicing, all other Mechanical Repairs, GRP Repairs, Antifouling, Moorings, Boat Haulage, Canopy and Upholstery Repairs. We also offer boat sales and a brokerage service, browse our online catalogue at www.mtlmarine.com or get in touch for more information



MANOR HOUSE MARINE & COTTAGES

Killadeas, Lough Erne, Co. Fermanagh, BT94 1NY
info@manormarine.com | T. 028686 28100

www.manormarine.com

*Offering you a world
of boating pleasure*

- Luxury Self Hire Cruisers
- Lakeside Self-Catering Cottages
- Golf Course & Tennis
- Day Boat Hire



share
Inishcruiser



Public Tours of Upper Lough Erne

Easter - August: Sunday's & Bank Holiday Mondays at 10.30am July & August 10.30am & 2.30pm

Wheel chair accessible • Duration 1 ½ - 2 hours

Tea, Coffee & biscuits served on board • Cruise Upper Lough Erne in luxury!

Booking available online or contact reception

Tel: 0044 (0) 28 67722122 or email: info@sharevillage.org • www.sharevillage.org

Northern Ireland Registered Charity NIC101204

Enniskillen Castle



Visit Our Newly Refurbished Visitor Centre & Museums

Enniskillen Castle | Co Fermanagh | BT74 7HL
T: +44 (0) 28 6632 5000 | f EnniskillenCastle
@ecmfc | enniskillencastle.co.uk

Enniskillen Castle is situated along the banks of the River Erne it is the perfect place to begin exploring Fermanagh's rich history. Home to Fermanagh County Museum and The Inniskillings Museum, visitors to Enniskillen Castle can also enjoy seven new galleries which tell the story of the local area from prehistoric to modern times.

The complex also boasts a stunning new purpose built visitor centre – with impressive views of Lough Erne and the Castle's redeveloped grounds and gardens – with a genealogy service & Café also available.

BEAR ESSENTIALS & SILVER BEAR CENTRE



Tirnawannagh | Bawnboy | Co.Cavan
T: 00 353 (0)49 9523461 or 00 353 (0)87 76 10537
E:info@beaessentials.ie | www.beaessentials.ie

Situated within the Fermanagh/Cavan Geopark beside Brackley Lake. The Teddy Bear Shop presents Anke's own unique Mohair Bears & Baby Essentials & stocks Steiff, Charlie Bears & others. The Silver Bear Centre offers workshops all year round. Wheelchair access, parking, picnic areas, garden, playground, refreshments. 25 minutes from Enniskillen.

BELLEEK POTTERY VISITOR CENTRE



Belleek, BT93 3FY
T:+44 (0) 28 6865 9300 | +44 (0) 28 6865 8501
E:takethtour@belleek.ie | www.belleekpottery.ie

Celebrating 160 years of expert craftsmanship in 2017, Belleek Pottery is Ireland's oldest working pottery. We invite you to take our 30 minute guided tour; visitors will see, hear and touch the product throughout the tour. Centre facilities include restaurant, retail showroom, museum and audio visual theatre.

See website for opening hours & admission prices.



National Trust Fermanagh

CASTLE COOLE



National Trust | Enniskillen | BT74 6JY
T: +44 (0) 28 6632 2690
E: castlecoole@nationaltrust.org.uk
www.nationaltrust.org.uk/castle-coole

The neo-classical masterpiece, completed in 1798 captures the elegance and opulence of its era. The mansion is set in a beautiful landscaped park with scenic walks to enjoy.

Visit the huge basement where an army of servants once worked, and look out for the underground 'Servants Tunnel'. Please contact the property directly for opening times and prices.

CROM ESTATE



National Trust | Newtownbutler | BT92 8AJ
T: +44 (0) 28 6773 8118 (Visitor Centre),
Holiday Cottage Booking Office: 0344 800 2070
E: crom@nationaltrust.org.uk
www.nationaltrust.org.uk/crom

Crom is one of the most important nature conservation sites in these islands. The beautiful lakeside demesne is home to ancient woodland, freshwater habitats, rare butterflies and the largest heronry in Ireland. Hire a boat from the Visitor Centre and enjoy viewing Crom from Lough Erne. Please contact the property for opening times and prices.

FLORENCE COURT



National Trust | Florence Court |
Enniskillen | BT92 1DB | T: +44 (0) 28 6634 8249,
Holiday Cottage Booking Office: 0344 800 2070
E: florencecourt@nationaltrust.org.uk
www.nationaltrust.org.uk/florence-court

A remarkable and welcoming 18th century Irish estate with extensive woodland trails, scenic gardens and children's play area, all set against a backdrop of mountains. Take a house tour to discover the home of the former Earls of Enniskillen. Home baking is a speciality in our tea-room. Please contact the property for opening times and prices.

EAGLES FLYING

Ballymote | Co Sligo | T:00 353 (0)-71-9189310
www.eaglesflying.com
 GPS: N54°06.207W 8°34.053



The attraction for all the family - excitement, fun, photo opportunities and much more at affordable prices. Enjoy Eagles, Hawks, Owls and Vultures flying right over your head, landing next to you or even landing on your own hand. Ireland's largest and multi awards winning Bird of Prey Centre offers incomparable experiences. More than 100 Birds of Prey, some of them with a wing span of 3 metres and many other animals are waiting for you. The interactive and highly entertaining bird shows start at 11 am and 3 pm every day. Before and after the shows you can enjoy guided tours or walk the parklands and see the birds in aviaries. You can also get hands-on with the animals in our Touch-Zoo, such as Raccoon, Foxes and Reptiles.

Open: daily 10.30am - 12.30pm & 2.30pm - 4.30pm / 1st April - 7th November / 2 hours programme / the 1 hour shows start at 11.00am and 3.00pm.

GARDEN OF THE CELTIC SAINTS

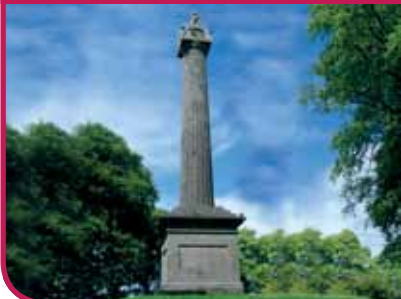


**Sacred Heart Church, Lisnarick Road,
 Irvinestown BT94 1EX
 T: 028 6862 1158 / 028 6862 1133**

The Devenish figures are a unique collection of wooden sculptures carved out of Irish oak, located in the centenary garden in Irvinestown.

The figures of saints and scholars which include Saints Molaise, Columcille and Killian are the work of Lithuanian Jonas Raiskas, who has been living in the country for the last four years. The garden is open to the public and is free. It really is well worth a visit!

COLES MONUMENT



**Forthill, Enniskillen
 T: +44 (0) 28 6632 5000**

Started in 1845, it is built in memory of Sir. Galbraith Lowry Cole G.C.B and took 12 years to build.

A series of 108 spiral steps leading to panoramic views of Enniskillen. Admission free. Children to be accompanied by adults.

Contact Fermanagh Visitor Information Centre for opening hours - +44(0) 28 6632 5000

F

FRANCO'S

R E S T A U R A N T

www.franco'srestaurant.co.uk

Award Winning Contemporary Restaurant



Franco's Restaurant in Enniskillen is a vibrant, buzzing restaurant, run by the Sweeney family for over 30 years. Situated in the centre of Enniskillen it is a must visit for locals and tourists alike. Specialities include mussels, crab, seafood, pasta, pizza, salads, chicken and steaks. Pre-booking advised at weekends but not essential.



Open Monday – Sunday 12 noon – 11pm. Early bird menu also available.
t: 028 6632 4424 | e: francos@btconnect.com

Fermanagh

Online

Don't forget to log on to:
fermanaghlakelands.com

Here you'll find an interactive guide to visiting Fermanagh:

Log on and check out our

GREAT VALUE BREAKS

in the beautiful Fermanagh Lakelands

- Accommodation
 - Hotels
 - Self Catering
 - B&B
 - Caravans & Camping,
 - Hostels
 - Cruising
- Sight-Seeing ideas
- Eating Out
- Events
- Special Offers
- Activity Breaks
- & much more...



facebook.com/fermanaghlakelands

@fermanaghlakes



Crom



Florence Court



Castle Coole



National
Trust

National Trust Fermanagh

Discover great days out
at our places

Crom - a waterside haven for wildlife, Florence Court - an 18th century house and gardens with trails to discover and Castle Coole - one of the finest neo-classical houses in Ireland. You'll find plenty to explore at National Trust Fermanagh.

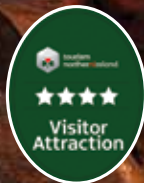
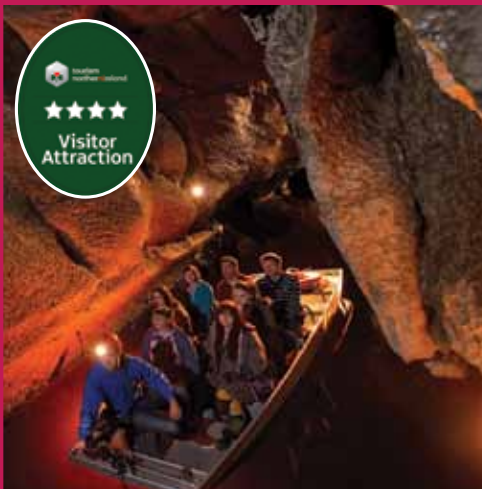


#NationalTrustFermanagh

nationaltrust.org.uk | 028 6634 8249

© National Trust 2016. The National Trust is a registered charity, registered in England. Registered in Fermanagh, Ireland.

MARBLE ARCH CAVES GLOBAL GEOPARK



43 Marlbank Road, Legnabrocky,
Florencecourt BT92 1EW
T: +44 (0) 28 6634 8855
E: mac@fermanaghomagh.com
www.marblearchcavesgeopark.com

Marble Arch Caves are one of Europe's finest showcaves allowing visitors to explore a fascinating natural underground world of rivers, winding passages and lofty chambers both by boat and on foot.

Open 7 days a week from Late March until the end of September. The first tour runs at 10:00a.m. and the last tour is at 4:30p.m (5:00p.m in July and August). Advance Booking is recommended particularly at peak times to avoid disappointment. Booking and information are available by telephoning +44 (0) 28 6634 8855 from 9:00am daily from late March to end of September. Cave tours may not be available after heavy rain so please contact us via telephone prior to departure.

The Marble Arch Caves Visitor Centre is located in a National Nature Reserve in the shadows of Culcagh Mountain and has coach and car parking, an exhibition area, classroom, toilets, souvenir shop, restaurant, free audio-visual presentation and free WiFi.

An education service and events programme are offered throughout the year.

Admission Prices:

See website for opening hours and admission rates.

GLENVIEW FOLK MUSEUM



Aghoo, Ballinamore | Co. Leitrim
T: (00353) 719644157 | M:00 353 (0) 87 6971901
E: glenviewmuseum@gmail.com | www.glenviewmuseum.ie

Features a private collection of over 10,000 antique, historical and novel items. On display is an impressive street scene with a variety of shops including a pub. The collection also contains Tradesmen's tools, household items, churns, lamps, coins and vintage transport including a mobile shop. Guided tours given. Coach parking.

RAILWAY MUSEUM @ HEADHUNTERS BARBERS SHOP



The World's
only Barber Shop
& Railway
Museum

5 Darling Street | Enniskillen | Co Fermanagh | BT74 7DP
T: +44 (0) 28 66 327488 | E: info@headhuntersmuseum.com
www.headhuntersmuseum.com

The only barber shop in the world where you get a haircut and explore the golden age of steam travel at the same time. Headhunters is inspired through the Johnston family's interest in local railway history with one of the largest collections of Irish railway memorabilia on display. Open Tuesday – Saturday 9.00am – 5.30pm. Free Admission to Museum.



THE ORGANIC CENTRE



Rossinver | County Leitrim | T: (00353) 71 98 54338
E: info@theorganiccentre.ie | www.theorganiccentre.ie

Organic gardens and polytunnels, orchard, compost display area, willow sculptures and community garden. Eco-shop, seeds and plants. Courses, events and workshops. Book your guided tours. Playground for children. Grass Roof Café open weekends only.

Open every day Mid-February to November. Closed Mondays

SHEELIN ANTIQUE IRISH LACE SHOP



Bellanaleck | County Fermanagh | BT92 2BA
T: +44 (0) 28 6634 8052 | E: rosemariacathcart1@gmail.com
www.instagram.com/sheelinlace/ | www.sheelinlace.com

All types of antique Irish lace and vintage items for sale including antique lace wedding gowns, christening gowns, lace handkerchiefs & wedding veils. One of the few places to buy antique Irish lace in Ireland. We also have a small museum within the lace shop showcasing some spectacular pieces from our private collection. Open Mon - Sat all year 10am-6pm

ERNE HERITAGE TOUR GUIDES

Commons | Belleek | BT93 3ED | M: +44(0) 78 5532 5693 | E: adam4eves@aol.com

We provide general and specialist Tour Guides as well as genealogists for any where in Ireland. Many of our guides are authors and broadcasters.

Dreenan Figure (Boa Island Figure/Janus Figure) - Boa Island | Kesh | Enniskillen



This very well-known stone figure has been sitting in the rural graveyard at Caldagh, in Dreenan, on Boa Island since at least 1841. For many years the scholarly opinion was that it belonged to the pagan Iron Age. The statue has often been described, wrongly, as a Janus figure – Janus being a Roman god who could look in many directions. But this is not a figure with two faces but two complete, more or less identical, figures placed back to back. It likely represents an unpleasant and frightening figure of mythology and folk-lore, identifying with the war-goddess Badhbh – the hooded crow. This view, based on the appearance of the figures, is given extra credibility by the fact that the name Boa island comes from the Irish Inis Badhbha – 'Badhbh's island'.

Tickety Moo



Moo HQ | Oghill Farm | Killadeas | Irvinestown | Co. Fermanagh | BT94 1RG
T: +44 (0)28 6862 8779 | Find Us On Facebook.

An ice cream farm shop with a difference! - Visitors can watch it's herd of award winning pedigree Jersey cows being milked and then visit the Ice Cream Parlour and enjoy fantastic flavours such as: Bubblegum Mallow, Balsamic Strawberry, Rhubarb Crumble and custard, Double Caramel Fudge Chunk and many more!
 Open Easter through September.

ULSTER AMERICAN FOLK PARK



2 Mellon Rd | Castletown | Omagh | Co Tyrone | BT78 5QU
T: +44 (0) 28 82 24 3292 | F: +44 (0) 28 8224 2241 | www.nmni.com

Immerse yourself in the story of Irish emigration at the museum that brings it to life. Experience the adventure that takes you from the thatched cottages of Ulster, on board a full-scale emigrant sailing ship, to the log cabins of the American frontier. Meet an array of costumed characters with traditional crafts to show, tales to tell and food to share.

Opening times: Mar-Sep: Tue-Sun, 10am-5pm. Oct-Feb: Tue-Fri, 10am-4pm and Sat & Sun, 11am-4pm. Closed on Mondays except Bank Holidays. Please visit **www.nmni.com** for admission prices.

AN CREAGÁN



186 Barony Rd | Omagh | Co. Tyrone | BT79 9AB | T: +44 (0)28 8076 1112
E: info@ancreagan.com | www.ancreagan.com | [f /ancreagan](https://www.facebook.com/ancreagan)

An Creagán has a range of facilities and activities for families, couples, individuals and groups set in breath-taking surround-ings of the majestic Sperrin Mountains. Facilities include: a licensed restaurant, conference and function facilities, craft shop, interpretive exhibition, children's play area and wild woods area which is an outdoor natural play throughout the year – see website for more details. designed to enhance children's holistic development through the encouragement of natural play in a safe and secure environment.

Genealogy in Fermanagh

During the Great Famine of 1845 - 50 in Ireland, Fermanagh lost between the Census of 1841 and 1851 around 40,000 people or about $\frac{1}{4}$ of its population through death and migration. There had been significant emigration before this time but the famine unleashed a flood of migrants and their descendants today populate, England, Scotland, Wales, the United States, Canada, Australia and New Zealand to name some of the principal destinations. Fermanagh's population continued to drop and at c55,000 is now one third of what it was.

Today, many enthused through the Internet and Family History Societies now like to come to Fermanagh in search of their roots. There are many examples of illustrious Fermanagh descendants around the world such as Neil Armstrong, the first man on the Moon and John White, Surgeon General of the First Fleet to Australia but, famous or otherwise, much can be found out about your Fermanagh ancestors. Taking on a genealogical search anywhere demands prior research.

The degree of help you can be given is often directly in proportion to the information you have personally gleaned and the best results are obtained by finding out in advance the Parish or townland of origin of your ancestors. Your particular family information does not come prepacked ready to be handed across the counter but with a little careful preparation your ancestral past may be revealed.

John B. Cunningham M.A.

Enniskillen Library

Enniskillen Library T: +44 (0) 28 6632 2886 or enniskillenlibrary@librariesni.org.uk

Here you can browse an extensive range of local and family history publications, graveyard inscriptions, some church records and details of what life in Fermanagh was like before your ancestors left. Ordnance Survey maps can also be seen here as well as microfilm of local newspapers going back to the early 1800s which can be an important source especially if you have knowledge of significant dates. As signed up members of Fermanagh Library (free) you can search Ancestry, one of the largest online databases in the world as well as local databases. The staff are helpful and knowledgeable having dealt with thousands of queries through the years. If they don't know the answer they probably know of someone who can provide the answer.

Family History Researchers, Genealogists & Tour Guides

Connect With Your Past (CWYP) E: cwyp@btinternet.com or send a text/sms to +44 (0) 777 240 2844 CWYP is a family history research company run by Frank McHugh, who is based in West Fermanagh. Frank is a professional genealogist and he has completed the Postgraduate Certificate in Genealogical, Heraldic and Palaeographic Studies at the University of Strathclyde. CWYP conduct family history research and tours, with expertise in Fermanagh, Armagh, Cavan, Tyrone, Leitrim and Monaghan.

Erne Heritage Tour Guides E: adam4eves@aol.com or T: +44 (0) 28 68 658327 or +44 (0) 7855 325 693 Genealogists & Tour Guides for all needs for all types of tours in Fermanagh or Ireland. Most of our guides are qualified Blue Badge or Irish National Tour Guides. Operating for over 15 years. See our Fermanagh books at the www.erneheritagetours.com online bookshop. Payment by Paypal. Contact John B. Cunningham, Erne Heritage Tours for further details.

Frank Roofe E: frankroofe@btinternet.com or T: +44 (0) 28 6632 5426 M: +44 (0) 7841 087 657 Frank Roofe is a Genealogist, based in Enniskillen, Co Fermanagh with over 30 years experience undertakes all types of family research. It is advisable for you to contact Frank prior to your arrival in Fermanagh as he may well be able to locate your ancestral home place and even some family. Tours of all ancestral home places located and identified in Fermanagh a speciality.

Fermanagh Genealogy Centre

Enniskillen Castle Visitor Information Centre
E: fgc2012@hotmail.com or T: +44 (0) 28 66 325000

Fermanagh Genealogy are a charitable organisation run by volunteers, who assist visitors to find their family history connections in Fermanagh by providing a free 30-minute face-to-face consultation meeting. As part of the genealogy service they outline the records available and possible avenues of research. It is recommended that visitors make a booking. The Genealogy Centre is open for appointments on Monday, Wednesday and Thursday afternoons from 2pm to 5pm.

Appointments can be made for the consultation service on the Enniskillen Castle Museum's website on www.enniskillencastle.co.uk/explore-more/fermanagh-genealogy-centre or by phoning Enniskillen Castle Visitor Information Centre. Fermanagh Genealogy also organise monthly talks in Enniskillen Library and publish an annual journal. Further information is available by emailing the Secretary on fgc2012@hotmail.com. Information can also be found on the Fermanagh Genealogy website, www.fermanaghgenealogy.org and on their facebook page, www.facebook.com/fermanaghgc.

Global Geopark



Marble Arch Caves are one of Europe's finest showcaves allowing visitors to explore a fascinating natural underground world of rivers, waterfalls, winding passages and lofty chambers both by boat and on foot.

Open 7 days a week from 13th March until the end of September. The first tour runs at 10:00am and the last tour is at 4:30pm (5:00pm in July and August). Visitors are advised to telephone before setting out during poor weather conditions. Booking is strongly recommended. An education service and an events programme are offered throughout the year. All other Geopark sites are open throughout the year.



Fermanagh & Omagh
District Council
Comhairle Ceantair
Fhear Manach agus na hÓmaí

There are many other sites and trails open in the Geopark all year round. For more information on these please visit pages 4 to 9.



Marble Arch Caves Global Geopark

43 Marlbank Road, Legnabrocky,
Florencecourt, Co. Fermanagh,
Northern Ireland, BT92 1EW

T: +44 (0)28 6634 8855

E: mac@fermanaghmagh.com

www.marblearchcavesgeopark.com

Marble Arch Caves

Adult £9.50 | Group Adult £9.00
Student/Senior concession £6.75
Group Student/Senior £6.25
Child £6.50 | Group Child £6.00
Family (2 adults and 2 children) £23.00
Family (2 adults and 3 children) £26.00
Children under five years old
are free but still require a ticket.
Please note prices maybe subject to change.



Marble Arch Caves
Global Geopark



United Nations
Educational, Scientific and
Cultural Organization



Marble Arch Caves
UNESCO
Global Geopark



The Buttermarket Art, Craft & Design Centre

Down St | Enniskillen | BT74 7DU | t: +44(0)28 6632 3117

The Buttermarket is made up of 19 Studios, Galleries and Shops and is one of Ireland's premier craft centres, located in the heart of Enniskillen. Here you can purchase some of the best handcrafted art and craft products in Fermanagh. The early 19th century buttermarket buildings has been beautifully restored and now houses such diverse crafts as pottery, ceramics, handmade jewellery, textiles, picture framing and original art. Soak up the relaxed atmosphere of the Buttermarket, where you can enjoy a unique shopping experience.

Open: Monday - Saturday 10.00am - 5.30pm.

Arts & Crafts

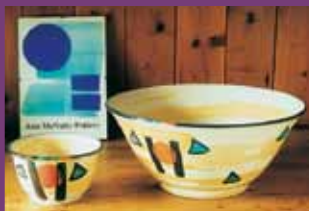
Enniskillen T: +44 (0) 28 6632 8741
Angela Kelly Jewellery



Angela Designs & Handcrafts a unique range of jewellery using Irish stone and silver. Rocks, fossils and gems collected throughout Ireland are transformed into "little works of art". Celtic and Contemporary ranges available. One off pieces a speciality. Studio Open: Monday - Sat (June, Jul & Aug), 11am - 5pm remainder of year open 11am - 5pm (closed Mondays).

18 The Buttermarket, Down Street
Enniskillen, BT74 7DU
E: info@angelakellyjewellery.com
www.angelakellyjewellery.com

Enniskillen T: +44 (0) 28 6632 4721
Ann McNulty Pottery



Fine, hand-thrown, white stoneware pottery brightly decorated with a beautiful satin glaze. The pots are all designed and made by Ann McNulty, as are her highly acclaimed fine art RAKU pieces. Open: Monday - Saturday 10.00am - 5.30pm all year round.

The Buttermarket Craft Centre, Down Street, Enniskillen
E: annmcnulty@talk21.com
www.annmcnultypottery.com

Enniskillen T: (028) 6632 7402
M: 078 5877 8426
Jo Tinney



Try to find the time to visit Jo Tinney Studio. Jo's paintings in watercolour, pastel and acrylic have won many awards. Van Morrison, Bob Dylan and Bill Clinton are some of the people who own her work. She has been elected to the Watercolour Society of Ireland, The Ulster Watercolour Society and the Arts Society of Ulster.

The Buttermarket, Enniskillen, BT74 7DU
E: jotinney@gmail.com
www.jotinney.com

Enniskillen T: +44 (0) 28 6634 0249
Marjorie Leonard Art Gallery



Fermanagh Artist Marjorie Leonard specialises in watercolour. Her landscapes are frequently inspired by the countryside of Fermanagh and are defined by their essence of light, colour and atmosphere. Her work is included in art collections worldwide. Work can be viewed all year. Mon-Sat 10am - 5.30pm

No 4, The Buttermarket, Down St,
Enniskillen
E: marjorie@marjorieleonard.co.uk
www.marjorieleonard.co.uk

Enniskillen T: +44 (0) 28 6632 8645
Frances Morris Irish Landscapes



Frances Morris has exhibited world-wide, her paintings are in public & private collections. In her studio & gallery there are 4 rooms which overflow with a selection of the artist's dynamic work - unique, vibrant original landscapes, limited edition atmospheric photographic images, and limited edition giclee prints.

The Buttermarket Craft Centre
E: info@francesmorris.com
www.francesmorris.com





BELLE ISLE

CASTLE & PRIVATE ISLAND



Experience Country Estate Living on a Private Island on Lough Erne.



Experience the ultimate in Irish Castle grandeur and Country Estate living on a Private Island on Lough Erne, at the heart of the Fermanagh Lakelands, an ideal base for exploring.

- Exclusive Castle Hire
- Award Winning Wedding Venue
- Corporate Entertainment
- Outdoor Activity Venue
- Self Catering Apartments & Cottages
- The Belle Isle School of Cookery

t: +44 (0) 28 6638 7231 | e: info@belle-isle.com | f: +44 (0) 28 6638 7261 www.belle-isle.com



Buying
options &
prices to suit
all budgets

ULTIMATE ESCAPE

Golf, Private Marina, Walks, Tennis, Cycle Paths, Football, Children's Play Area



CLAREVIEW
COUNTRY ESTATE

Hillside Park / Marina / Golf



**New And Used Leisure
Homes For Sale**
Exclusive & gated estate

Ah...The Quiet Life

Contact 07595 204702 / 07866 672018



www.clareviewcountryestate.co.uk

Enniskillen

Fermanagh Cottage Industries

T: +44 (0) 28 6632 2260



14 East Bridge Street, Enniskillen
E: fermanaghcottageindustries@live.com | www.fermanaghcottage.co.uk

The shop contains an extensive range of the very finest Irish souvenirs, celtic scarves, Irish 'T' shirts, Irish linens, glass, card making, scrapbooking, haberdashery, wedding favours, beads, ribbons etc

Open: Mon-Sat 10am-5.30pm. Jan-Easter closed Wednesdays.

Also find us on Facebook at Fermanagh Cottage Industries.

Belleek

Belleek Pottery

T: +44 (0) 28 6865 9300 or +44 (0) 28 6865 8501

Belleek | County Fermanagh | BT93 3FY | E: takethetour@belleek.ie | www.belleekpottery.ie

Celebrating 160 years of expert craftsmanship in 2017, Belleek Pottery is Ireland's oldest working pottery. We invite you to take our 30 minute guided tour; visitors will see, hear and touch the product throughout the tour. Centre facilities include restaurant, retail showroom, museum and audio visual theatre. **See website for opening hours & admission prices.**



Belleek Visitor Experience

Activities For All



Activities Index

Activity Centres	34
Angling	38
Golfing	40
Canoeing	42
Karting	42
Air Activities	43
Equestrian	43
Entertainment	44
Cycling & Walking	46
Spa & Yoga Breaks	48
Health & Fitness	50



Irvinestown

CASTLE ARCHDALE COUNTRY PARK

T: +44 (0) 28 6862 1588 F: +44 (0) 28 6862 1375

346 Killadeas Road | Irvinestown | BT94 1PP | www.doeni.gov.uk/niea/

The country park boasts beautiful woodland and lough shore walks. There is also a butterfly garden, wildflower meadow. Castle Archdale was the main flying boat base from which they flew during WWII and this is highlighted in an exhibition within the centre entitled 'Castle Archdale at War'.

Opening Times:

Country Park - Free Admission. Open access to pedestrians 24 hours a day, 365 days a week.

Car Parks are open at all times. **Visitor Centre**

Exhibition - Open 12:00 - 16:00 on Sundays. Closed

Christmas Day. Can be opened by prior arrangement at other times. **Café** - Open daily 10:00-17:00 throughout July and August. Large groups can be catered for outside of these times.



Lusty Beg Island, Kesh
LUSTY BEG ISLAND ACTIVITY CENTRE

T: +44 (0) 28 6863 3300

Lusty Beg Island | Kesh | E:info@lustybegisland.com | www.lustybegisland.com

Idyllic 75-acre private island set in the heart of the Fermanagh Lakeland. The corporate hospitality venue with a difference. The perfect mix in business, leisure and pleasure. Select accommodation, team-building, corporate hospitality, away days, activity breaks.

Ballygawley
TODDS LEAP CENTRE

T: +44 (0) 28 8556 7170

30 Todds Leap Rd | Ballygawley | Co. Tyrone | BT70 2DW | E:info@toddsleap.com | www.toddsleap.com



Todd's Leap is Ireland's largest outdoor activity centre in an away from it all setting, we specialise in providing the ultimate fun days to all types of people whatever the occasion. Our range of activities include Off-Road Driving, Paintball, Body Zorbing, Zipline, Drop Zone, Archery and much more. With the longest Zipline in Ireland and the first commercial drop zone in Europe, we have all it takes to make it a special day. Full onsite facilities include a fully licensed restaurant and log cabin accommodation.

Garrison
LOUGH MELVIN HOLIDAY CENTRE

T: +44 (0) 28 68658142 / +44 (0) 28 68659814

Main Street | Garrison | Co. Fermanagh | E: loughmelvin2@btconnect.com | www.melvinholidaycentre.com



Situated in Garrison Village. Ideal for activity holidays offering a full range of outdoor activities, both land and water based packages are available for groups, schools, families, university, youth groups etc. Fishing holidays can also be arranged. Full board & catering provided.

Belcoo
CORRALEA ACTIVITY CENTRE LTD

T: +44 (0) 28 6638 6123

Upper Lough McNea | Belcoo | BT93 5DZ | E: info@activityireland.com | www.activityireland.com



Watersports & outdoor activities: canoeing, water trampoline, surfing, windsurfing, caving, climbing, archery, mountain biking and canoe hire, individuals, families and groups. Activities available for residents & non-residents. Accommodation (if required) in self-catering cottages on the same site. Weekend packages available all year round, family packages Easter Bank Holidays, July and August.

Lisnaskea
SHARE DISCOVERY VILLAGE

T: +44 (0) 28 6772 2122

221 Lisnaskea Road | Shanaghy | Lisnaskea | BT92 0JZ | E: info@sharevillage.org | www.sharevillage.org



Ideal for families, groups & individuals to take part in over 30 activities offered at this accessible site. Activities include; archery, banana skiing, kayaking, canoeing, climbing, dinghy sailing, windsurfing, combat corps, t-shirt painting, bouncy castle and much more. Full board accommodation, self-catering, caravan & campsite available. During July and August a daily Activity Timetable runs, perfect for families or couples wanting to take part in an activity. Canoe, Kayak and Stand Up Paddle Board hire is available daily to paddlers with some experience. **Activity prices start from £7**

Enniskillen
SAFARI ACTION

T: +44 (0) 28 66388373 M: +44 (0) 7754 263 076

Roskey Ely Lodge | Enniskillen | Co Fermanagh | BT93 7EJ | E: ron@safariaction.co.uk | www.safariaction.co.uk



Activities for groups of all sizes. Corporate Days Out / Stag & Hen Parties / Team Building Activities / Family Days / Youth Groups. All activities are also suitable to those with little or no experience.

Activities include **Off Road Driving, Shooting** (includes soft air rifle shooting & clay shooting), **Archery and Team Building Tasks**.



**Fermanagh
Lakelands**

**Fermanagh
take it all in ...
... at your leisure**



fermanaghlakelands.com

share
Discovery Village



Fun for all the family!

SHARE is positioned on Upper Lough Erne just outside Lisnaskea, offering a range of over 30, land, water and arts activities.

Family & Group bookings available
Activity Sessions run daily in July & August for the public.
Canoe, Kayak & SUP hire available.

SHARE DISCOVERY VILLAGE

221 Lisnaskea Road, Lisnaskea, BT92 0JZ
T: 0044 (0) 28 67722122

www.sharevillage.org

Northern Ireland Registered Charity NIC101204

Activities For All

Angling



Visit our comprehensive
Angling Section online at
fermanaghlakelands.com

“ The Fermanagh Lakelands is a haven for anglers with its abundance of loughs and rivers.”

Our waters offer game anglers the opportunity to fish for salmon as well as stocked rainbow and brown trout. The famous Sonaghan, Ferox and Gillaroo can also be found in these diverse waters.

The Coarse angler will find some of the finest fishing available in Europe, with bream, roach and hybrids in abundance as well as perch and tench.

Add to this pike fishing that is second to none - whether seeking to catch them on fly or in a more traditional manner and the region offers all anglers wonderful opportunities.

There is no closed season for the coarse angler as Lough Erne and many still waters are open all year round. There are many popular loughs, rivers and fisheries that are easily accessed by visitors. Lough Erne & Lough Melvin being the more well known.

Lough Erne

Lough Erne is made up of the Upper Lough east of Enniskillen and the Lower Lough which runs west to Belleek. The Lough is a mixed coarse and game fishery. The game angling, in the main, takes place on the Lower Lough although trout are found throughout the system.

The Lower Lough is a large expanse of water, over 15 miles long with numerous islands and bays. These provide vast areas of shallow water and rocky shores making for ideal fishing grounds. Although a limited number of salmon run the Lough wild brown trout are the quarry and the Lough holds an excellent head of fish.

Lough Melvin

Sitting on the western end of Co. Fermanagh this is one of Ireland's most famous Loughs. It is home to three distinct species of trout - the magic Sonaghan, the Gillaroo and the Ferox - as well as enjoying a run of spring salmon and grilse.

Fishing starts in February with the arrival of the first salmon and continues through the months with grilse from May to July and wonderful trout fishing throughout the season. Trolling is the most used method for the springers but fly fishing for the Sonaghan and Gillaroo, as well as the Grilse, is excellent.

Lisbellaw
BELLE ISLE ESTATE

T: +44 (0) 28 6638 7231 | F: +44 (0) 28 6638 7261

Belle Isle Estate | Lisbellaw | Co. Fermanagh | BT94 5HG
E: info@belle-isle.com | www.belle-isle.com

Belle Isle Estate has 4 pike fishing boats and 2 Garmin Fish Finders kindly donated by M. Founds, Anglers World. There are numerous bays and islands to explore, and a boat hired from Belle Isle provides access to some exclusive coarse fishing. Gord Burton, legendary Pike Angler, pointed out a number of vast shoals of coarse fish he spotted on his echo sounder and we pre-baited a swim of 22 feet in depth for top coarse/match angler Baz Smith. Gord Burton, (Professional Predator Angler) commented, "Belle Isle is a perfect location for exploring the pike fishing potential on the Fermanagh Lakelands. My view is, it's a Pike Heaven. There are 40 pounders here just waiting to be caught."

Enniskillen
FISHING TACKLE & BAIT

T: +44 (0) 28 6632 2008 | F: +44 (0) 28 6632 2008

Old Scotch Stores | 1 Sligo Road | Enniskillen | Co. Fermanagh | BT47JY
E: sales@fishingtackleandbait.co.uk | www.fishingtackleandbait.co.uk

Visit one of Ireland's largest and best stocked fishing tackleshops, Fishing Tackle and Bait. Accurate advice and great dealson all your bait and tackle requirements as well as the latest information on the Fermanagh fishing hotspots. Guide Service Available. Open Monday - Saturday 8.30am-5.30pm.

Belleek
DULRUSH FISHING LODGE & ACTIVITY CENTRE

T: +44 (0) 28 6865 8066 | M: 075 4041 8223

Dulrush House | Dulrush | Belleek | Co. Fermanagh | BT93 2AF
www.dulrushfishinglodge.com

Nestled on the shores of Lower Lough Erne, Dulrush Fishing Lodge offers visitors a variety of highly enjoyable fishing experiences. Choose from our one day, weekend or week long breaks. Comfortable accommodation, hearty meals and a warm welcome await you at Dulrush Fishing Lodge. Choose from our fleet of boats to take you across Lough Erne. Gillies, Licenses and equipment can all be pre booked before you arrive. Dulrush Fishing Lodge, the ultimate in Fermanagh Fishing.

Enniskillen
HOME, FIELD & STREAM

T: +44 (0) 28 6632 2114

18 - 20 Church Street | Enniskillen | Co Fermanagh | BT74 7EJ
E: homefieldandstream2@gmail.com | www.homefieldandstream.com

Home, Field & Stream is Ireland's leading Fishing tackle and bait shop. Expert advice from local fishermen on local fishing hot spots and tackle advice. We stock all the leading fishing tackle brands from Hardy & Grey's, Savage Gear, Daiwa and Shimano etc all at excellent prices. Open Monday to Saturday 9:00am - 5:30pm

Golfing

Castle Hume Golf Club

T: +44 (0) 28 6632 7077

Castle Hume | Belleek Road | Enniskillen | County Fermanagh | BT93 7ED
E: info@castlehume golf.com | www.castlehume golf.com

Championship Golf Course is only a few minutes drive from Enniskillen on the A46 Belleek/Donnegal Road. Hospitality service for cruising golfers from local jetty. Full catering and bar facilities, public floodlit driving range including state of the art Golf Academy and fully stocked Pro Shop. Visitors and societies welcome.



Enniskillen Golf Club

T: +44 (0) 28 6632 5250

Castle Coole Road | Enniskillen | BT74 6HZ | Club Steward: Darryl Robinson | Club Pro: Liam McCool
E: info@enniskillengolfclub.com | www.enniskillengolfclub.com

Eighteen-hole golf course, par 71, outstanding views over the town and surrounding countryside. Bar and snack facilities. Pro Shop/Golf Lessons also available. Club and Golf Trolley/buggy hire facility.

Special rates for societies.

Opening Hours:

Summer - Weekdays
9am - 10.30pm.

Summer - Weekends
8am - 10.30pm

Green Fees:

Weekdays £20; Saturdays,
Sundays & Bank Holidays £25.



The Faldo Course @ Lough Erne Resort

T: +44 (0) 28 6632 3230

Belleek Road | Enniskillen | Co. Fermanagh | BT93 7ED
E: info@loughernerresort.com | www.loughernerresort.com

Superb All Year Round Playing Conditions, 18 spectacular Golf Holes, with stunning views of Castle Hume Lough & Lower Lough Erne.

“ A Great Place to Play, A Great Place to Stay ”

- Rory McIlroy

The Golf Academy: 1 & 3 Day Golf Schools; Individual & Group Tuition.
Packages by Head Professional, Lynn McCool.



Canoeing

Lisnaskea
SHARE DISCOVERY VILLAGE

T: +44 (0) 28 6772 2122

221 Lisnaskea Road | Shanaghy | Lisnaskea | BT92 0JZ
E: info@sharevillage.org | www.sharevillage.org



Paddle the award winning Lough Erne Canoe Trail. SHARE offer canoe and kayak hire as well as guided and self guided canoe/kayak trips around Fermanagh's beautiful Upper Lough Erne. Choose from half or full day canoe/kayak hire or enjoy a guided expedition with a certified BCU coach on a 2-3 day paddle through some of Northern Ireland's most undiscovered yet astonishing scenery. All equipment provided. 2-3 day guided canoe/kayak trips can be arranged on request for groups of 6 or more persons. Canoe, Kayak and Stand Up Paddle Board hire is available daily to paddles with some experience.

Lough Erne
LOUGH ERNE CANOE TRAIL

T: +44 (0) 28 9030 3930

Outdoor Recreation Northern Ireland | The Stableyard | Barnett's Demesne Malone Road | Belfast | BT9 5PB
E: info@canoeni.com | www.canoeni.com

The Lough Erne Canoe Trail is a 50 kilometre route through the magnificent lakes of Upper and Lower Lough Erne. A comprehensive website and waterproof guide are available to give practical advice on everything required for an enjoyable canoeing experience.

Karting

Kesh
LAKELAND KARTING

T: +44 (0) 28 6863 2562

Bannagh | Kesh | Co. Fermanagh | BT93 1AA
www.lakelandkarting.co.uk

Lakeland Karting is a 550m, all weather, outdoor go-karting track. Located at Bannagh, Kesh, the track is fully marshalled and an ideal venue anytime of year for a fun-filled, exciting day out. Especially good for stag/hen/ birthday parties, corporate or team building events, youth group outings, family days out or just fun with friends! Karts available for both juniors and adults. Booking is essential and all our prices and packages together with further information can be found online.

Castlefin
CASTLEFIN X-TREME KARTING

T: 00 353 (0) 8688 88041

Sessiagh | Castlefin | Co. Donegal
E: castlefinkarting@hotmail.com | www.castlefinkarting.com

The fully outdoor racing track is set over 9 acres and provides the thrills of hair pins, full length straights and sweeping bends. Cadet karts available and adult sessions and Grand Prix. Archery also available. Please check us out on facebook @Castlefin Karting.

Air Activities

Enniskillen ENNISKILLEN AIRPORT

T: +44 (0) 28 6632 9000

Enniskillen (St Angelo) Airport | Trory | Enniskillen | F: +44 (0) 28 6632 9100
E: info@enniskillen-airport.co.uk | www.enniskillen-airport.co.uk



Having been re-opened in 2004, Enniskillen Airport (Flyer magazine "Airfield of the Year 2006") continues to expand with the addition of 2 helicopter maintenance companies to its already impressive portfolio. Two locally based aeroplane and helicopter flying schools offer a unique opportunity to view of the beautiful Fermanagh Lakeland. A warm welcome awaits visitors to Cafe St Angelo, customers can watch all the airport activity from our specially designed viewing area while enjoying first class cuisine. All the staff and management of Enniskillen Airport look forward to welcoming you to this very friendly airport.

Coleraine MOONJUMPER INTERNATIONAL

T: +44(0)28 7035 6356

Suite 9 | Sandal Village Centre | Knocklynn Road | Coleraine | BT52 1WT | T: +44 (0) 28 7035 6356
M: 07885664476 (For Technical Information) E: erika@moonjumper.com | www.moonjumper.com

Full-time BPA approved sky-diving and tandem centre. We offer 13,000 ft. tandems out of 15 seater aircraft. For the more adventurous we offer solo parachute courses. Peak season 8am to dusk and Off peak season 8am to 5pm. Tandem £260 + insurance £35 and solo £220.

Equestrian

Enniskillen DRUMBARAGH STABLES

T: 07843 435231

E: ema79_anderson@yahoo.com

Drumbaragh Stables is a family run yard in Ballinamallard that caters for all your equestrian needs: trekking, lessons, pony camp and much more. We also offer pony trekking in Castle Archdale Country Park, Lisnarick during weekends and school holiday periods starting from Easter. Please check out our Facebook page or give us a call for further information.

Fivemiletown THE FOREST STABLES

T: +44 (0) 28 8952 1991

100 Cooneen Road, Fivemiletown, Co. Tyrone, BT75 0NQ - Donna Conroy B.H.S.A.I
M: 078 3201 2342

BHS approved riding school and trekking centre, new river trail opened and all off road routes. Quiet animals to suit beginners as well as schooled horses for advanced riders. Qualified Staff. Accommodation locally. **Open:** Mon – Sat by arrangement. Prices start from £10.

Entertainment

Enniskillen THE ARDHOWEN



97 Dublin Road | Derrychara | Enniskillen | BT74 6FZ
T: (Admin.) +44 (0) 28 6632 3233
T: (Box Office) +44 (0) 28 6632 5440
E: ardhowen.theatre@fermanaghmagh.com
www.ardhowen.com

A 290 seater auditorium, studio theatre, restaurant and bar. A wide ranging programme including Comedy, Drama, Dance, Classical Music, Folk, Jazz, Blues, Light Music, Festivals, as well as schools and community events. There is ample on site car parking with disabled access and a loop system in the auditorium.

Open: Mon - Fri 9am - 5pm. Box Office: Mon - Fri 9.30am - 4.30pm. Saturday 11:00 - 1pm; 2pm - 5pm; 6pm - 7pm

Enniskillen DONALDSON'S SNOOKER HALL

Old Henry Street | Sligo Road | Enniskillen
T: +44 (0) 28 6632 5585
W: www.zodiacbingoeniskillen.co.uk
Also follow us on facebook through Zodiac Bingo.

Modern Amusement Complex with amusements, snooker. 8 & 9 ball pool and a separate area for poker and fruit machines. Free refreshments served all day. Access to Zodiac Bingo.

Enniskillen IMC Cinemas

Raceview Factory Road | Enniskillen | BT74 6DP
T: 028 6632 4777 | www.imccinemas.ie

Enjoy a day or evening at Enniskillen's IMC Cinema. Each screen offers auditoria style seats giving a perfect view for everyone. Open all year with a selection of daily show times. Kids can also enjoy the games area, Pick n' Mix and shop area.

Enniskillen ZODIAC BINGO

1E Sligo Road | Enniskillen | Co. Fermanagh
T: +44 (0) 28 6632 5585 | +44 (0) 28 6632 0006
www.zodiacbingoeniskillen.co.uk
Also follow us on facebook through Zodiac Bingo.

- Link and In-house, Book and Slot Bingo played every day and evening (except Sunday).
- Daytime bingo starts at 12 pm enter through Snooker Hall. Evening bingo @ 7.30pm
- Massive Jackpots and prize money on offer – see us on facebook

Irvinestown JOHNNY ROCKO'S

35 Main St | Irvinestown | Co Fermanagh | BT94 1GJ
T: +44 (0) 28 6862 1115 | M: 078 7177 6113
E: johnnyrockos@hotmail.co.uk

10 Pin Bowling Alley - 6 lanes of ten pin bowling
 - Ideal for school trips or team bonding days
 - Open 7 days a week - available for exclusive bookings Kids Go Karts - mini go-karts for age 3 upwards Little Rambo's Soft Play Area - 3 level soft play area - ball pool with exploding volcano
 - 3 lane astro wave slide - super fast speed slide
 - viewing galleries on each level - warm relaxing area with comfortable sofas & beverages - toddler area - coloured armbands for each group. **Party Packages & Party Rooms Private Room Hire for Special Occasions School Group Package. American Style Diner.** Opening times: Monday-Saturday: 10am to late Sunday: 1pm to late

Omagh
STRULE ARTS CENTRE

Strule
Arts
Centre
Omagh



Townhall Square | Omagh | Co. Tyrone | BT78 1BL
[f /StruleArtsCentre](https://www.facebook.com/StruleArtsCentre) | [@StruleArts](https://twitter.com/StruleArts)
 T: 02882 247831 | E: strulearts@fermanaghmagh.com
www.struleartscentre.co.uk

Strule Arts Centre is a multi-purpose arts venue and conference centre situated in the heart of Omagh, County Tyrone. It features a 384 seat theatre, a 125 seat lecture theatre, recording studio, a visual arts gallery, dance studio and cafe.

Opening Dates/Hours Monday and Tuesday 9.30am – 5.00pm, Wednesday – Saturday 9.30am – 10.30pm on performance nights.

Charges 2016/17 Admission to Gallery Exhibitions is free, unless otherwise stated. Events, performances and workshops admission price vary.

Fermanagh Online



Here you'll find an interactive guide to visiting Fermanagh:
Log on and check out our GREAT VALUE BREAKS

Accommodation

- Hotels
- Self Catering
- B&B
- Caravans & Camping,
- Hostels
- Cruising

Sight-Seeing Ideas
 Eating Out
 Events
 Special Offers
 Activity Breaks
 & much more...

[facebook.com/fermanaghlakelands](https://www.facebook.com/fermanaghlakelands)
[@fermanaghlakes](https://twitter.com/@fermanaghlakes)
fermanaghlakelands.com



CORRALEA ACTIVITY CENTRE

Wide range of outdoor activities on site

Ideal venue all year round for day groups, families, social clubs, hens and stags, youth, school and church groups.

DAILY ACTIVITIES FROM OUR SUMMER BUZZ PROGRAMME FOR INDIVIDUALS AND FAMILIES

Self-catering accommodation on the same site.

Tel: 02866 386 123



email: info@activityireland.com
www.activityireland.com
www.corraleacottages.com



Activities For All

Cycling & Walking



Fivemiletown T: +44 (0) 28 8952 1188
BLESSINGBOURNE PUMP TRACK

E: info@blessingbourne.com
www.blessingbourne.com

Challenge yourself to an exhilarating 14 km bespoke **mountain bike** trail set in the grounds of the scenic Blessingbourne Estate. Blessingbourne offers pumptrack at head of trails, testing single track riding and family friendly route combinations. Blessingbourne trails have been created by the world class **Phil Saxena from Architrail, course designer for the Beijing Olympics**. We can offer skills courses and light refreshments for booked groups, bike hire is also available at £15/adult, £5/child, booking is essential. Trails are open all day and available to night ride. Prices - Car/Barrier - £5 in coins/car.

Enniskillen T: +44 (0) 300 3031777
ENNISKILLEN ECOTRAIL

Environment Officer: Fermanagh & Omagh District Council. E: imelda.mccarron@fermanaghomagh.com
www.fermanaghomagh.com

Enjoy the **Enniskillen Town Ecotrail** and Permanent Orienteering Course, enabling young people to enjoy a quality learning experience in the 'outdoor classroom' of the countryside and seek to promote a knowledge and understanding of, and responsibility for, the local natural and built environment. **CD Rom and maps can be accessed, free of charge.**

Fermanagh FOREST PARKS

Florencecourt Forest Park has gardens, walks, picnic sites and toilets. **Lough Navar** includes the **Magho Cliff Path** and a scenic drive leading to a magnificent viewpoint over **Lower Lough Erne**. **Castle Caldwell** is a nature reserve with trails and walks. **Castle Archdale Country Park** also has a nature reserve with trails, marina, picnic sites, shop, restaurant and toilets.

KINGFISHER CYCLE TRAIL

W: www.kingfishercycletrail.com
www.sustrans.org.uk

Over 300 miles of mapped and signposted cycle trails in the Fermanagh & Leitrim region. From rolling hills, to country lanes to Atlantic Coast, the trail has something for all tastes. Suitable for Independent or group travel.

LOUGH NAVAR VIEW POINT

Lough Navar View Point is a must see for any visitor to County Fermanagh. There are spectacular views over Lower Lough Erne, Donegal Bay, the Blue Stack and Sperrins Mountains. It rises to the top of the Magho cliffs at a height of 1,000ft. A seven mile long drive has been created to allow the public to enjoy this scenery. Car parking facilities, picnic areas, viewpoints and short walks to interesting features have been provided.

NORTH WEST TRAIL

www.northwest-trail.com | www.sustrans.org.uk

A 326km circular cycle route through counties Donegal, Tyrone, Fermanagh, Leitrim, and Sligo. Travelling through a wide variety of scenic landscapes, utilising quiet country roads with some traffic free sections, mostly in urban areas. The route enjoys dramatic views of the Atlantic Ocean, with scenic cycling in remote uplands and through rural towns and villages passing through the main towns of Enniskillen, Sligo, Donegal, Lifford, Strabane and Omagh.

MARBLE ARCH CAVES GLOBAL GEOPARK



43 Marlbank Rd, Legnabrocky,
Florencecourt, BT92 1EW
T: (028) 6634 8855
E: info@marblearchcavesgeopark.com
www.marblearchcavesgeopark.com

Marble Arch Caves Global Geopark contains the rugged mountainous uplands and the gentle rolling lowlands of Counties Fermanagh and Cavan. Taking in the world-famous Marble Arch Caves and new attractions such as Cavan Burren Park, the Geopark features some of the finest natural landscapes in Ireland and offers a window into the area's 895 million year past.

The unspoiled environment and great outdoor facilities make the Geopark the perfect location for exciting day trips and activity holidays. All Geopark sites and trails, with the exception of Marble Arch Caves, are open all year round and are free of charge.

There is something for everyone as the sites provide for a variety of interests including not only geology but also folklore, history, archaeology, wildlife and outdoor recreational activities such as walking and cycling. For price information please visit our website:

www.marblearchcavesgeopark.com

Spa & Yoga Breaks



The Elemis Spa @ Killyhevlin Lakeside Hotel

T: +44 (0) 28 6632 1217

Indulge your senses in the Elemis Spa at the 4* Killyhevlin Lakeside Hotel. The Spa offers a wide range of Elemis treatments for both the modern man and woman with full and half day retreats available including a light lunch and use of the hydrotherapy area. Beauty therapy treatments and products are also available from leading brands such as Elemis, Jessica Nails, Geleration and Vita Liberata.

Killyhevlin Hotel | Dublin Road | Enniskillen
Co. Fermanagh | BT74 6RW
E: spa@killyhevlin.com | www.killyhevlin.com/spa

Colebrooke Spa

T: +44 (0) 28 8952 2318

Colebrooke Spa, located in the Fermanagh Lakelands, is a unique spa destination nestled in the grounds of Colebrooke Estate, seat of Viscount & Viscountess Brookeborough and one of the region's most important and historic stately homes. Opened in 2012 as the result of a Channel 4's 'Country House Rescue' project at Colebrooke Park, the Spa has become synonymous with providing an oasis of tranquillity and privacy, where guests can truly relax in the our Spa Facilities, including an outdoor hot tub, cedar wood barrel sauna whilst overlooking the Victorian Stable Yard and cosy relaxation area.

Spa guests have the choice of luxury Yon-ka, Decleor, Mama Mio and Jessica Nail treatments and retreat packages and can extend their experience by enjoying a delicious spa brunch or lunch. Colebrooke Spa is open daily by appointment only including evenings.

Colebrooke Estate | Brookeborough | Co. Fermanagh | BT94 4DW
E: info@colebrookesspa.com | www.colebrookesspa.com

Corick House Hotel & Spa

T: +44 (0) 28 8554 8216

The luxury spa facility at Corick House Hotel & Spa offers guests a retreat from the stress of everyday life. The relaxing Thermal Suite includes The Steam room, Sauna and Thermal Lounger and is the perfect prelude to any of our spa therapy treatments introducing you to a state of the art Hydrotherapy massage pool with jets of therapeutic water to sooth aching muscles and wash away any tension, whilst preparing the muscles for a deep tissue or soothing massage. The Serenity Suite @ Corick House is something rather special. A private retreat for groups or couples to enjoy ... With its own outdoor hot tub, relaxation area with herbal teas, thermal seating and private steam chamber this really is the ultimate in spa Luxury. Of course every Spa has its signature product and Corick House Spa is no different. All therapists are fully trained on the [comfort zone] skin care range and specialise in skin analysis and skin care recommendation. For more details on all packages treatments and products available download our brochure from our website.

Corick House Hotel & Spa | 20 Corick Road | Clogher | Co Tyrone | BT76 0BZ
E: spamanager@corickcountryhouse.com | www.corickcountryhouse.com

Lough Erne Resort - The Thai Spa

T: +44 (0) 28 6632 3230

The Thai Spa at Lough Erne Resort promises to give you the Spa journey which will leave you feeling totally restored & revived. Inspired by Thai healing and beauty rituals, the ESPA spa treatment menu boasts Massages, Body treatments and luxurious Facials derived from traditional Asian holistic healing practices. The Asian ambience of the spa is enhanced by our thermal area and relaxation rooms alongside the whirlpool and infinity swimming pool are the perfect prelude to any treatment. Individual treatments and spa day packages are available for both residents and day guests to the resort.

Belleek Road | Enniskillen | Co. Fermanagh | BT93 7ED | F: +44 (0) 28 6634 5758
E: info@loughernereresort.com | www.loughernereresort.com

Manor House Country Hotel

T: +44 (0) 28 6862 2210

At Manor House Country Hotel we appreciate that you need to take some time out to recharge the mind and body to relax and rejuvenate yourself. The tranquil lakeside setting of the hotel and extensive leisure facilities is the perfect country retreat combining old world charm, with modern hotel luxury and a warm Fermanagh welcome. **Leisure Facilities include:** Swimming Pool, Steam Room, Jacuzzi, Sauna, Fitness Suite & Outdoor Hot Tub. Membership Packages are available.

Killadeas | Enniskillen | Co. Fermanagh | BT94 1NY
E: leisure@manorhousecountryhotel.com | www.manorhousecountryhotel.com

Health & Fitness

Bawnacre Centre

T: +44 (0) 28 6862 1177

Castle Street | Irvinestown | Co. Fermanagh | BT94 1EE
E: george.beacom@fermanaghmagh.com | www.bawnacrecentre.com

Tennis & Leisure facilities - GETFIT! HAVE FUN! Enjoy tennis, badminton, training zone, pool, table tennis or organise your own team to use the large sports hall, grass or synthetic pitches and playpark. 3G playing pitch available. Community events all year round. Mon-Fri: 10am - 10.30pm. Sat: 10am - 6pm.

Share Fitness

T: +44 (0) 28 6772 2122

221 Lisnaskea Rd | Shanaghy | Lisnaskea | Co. Fermanagh | BT92 0JZ
E: info@sharevillage.org | www.sharevillage.org

SHARE Fitness is our state of the art leisure suite including gym, swimming pool with ramped access, sauna, steam room and health club. Based on the shores of Upper Lough Erne, SHARE Fitness is the ideal place to relax. A range of classes are available - please contact for further details. Day visitor and private membership rates are available.

Open: 8am - 10pm Monday - Saturday | 10am - 6pm Sunday.

Fermanagh Lakeland Forum

T: +44 (0) 28 6632 4121

Broadmeadow (Off Wellington Road) | Enniskillen | Co. Fermanagh | BT74 7EF
E: fff@fermanaghmagh.com | www.lakelandforum.com

Activities include badminton, football, fitness classes, soft play areas, steam room, squash, 5 playing fields, weight training with hi-tech fitness suite. Indoor heated swimming pool. Disabled suite. Outdoor childrens playzone. 3G general games area and full size 3G soccer pitch.

Open: Monday - Friday: 8.00am - 10.30pm | Saturdays: 10.00am - 6.00pm | Sun 2.00pm - 6.00pm
Swimming Pool: Sat & bank hols: 10.00am - 5.00pm

Shopping

Enniskillen

Armstrong & Kingston

T: +44 (0) 28 66322113

8 High Street | Enniskillen | BT74 7EH | E: armstrong.k@btconnect.com

ARMSTRONG & KINGSTON is a long established Menswear business in the centre of Enniskillen. Renowned for excellent customer service, we stock a range of discreetly stylish clothes which include, PAUL & SHARK, GANT, SAND, POLO RALPH LAUREN and LACOSTE.

Enniskillen

Ashwood Garden Centre & Coffee Shop

T: +44 (0) 28 6632 2243

204 Sligo Rd | Enniskillen | BT74 5QR | E: info@ashwoodgardencentre.co.uk | www.ashwoodgardencentre.co.uk

Ashwood Garden Centre & Granny Walsh's Coffee Shop is set in the quiet picturesque countryside and is an ideal place to visit while you are in Fermanagh. The Garden Centre has a huge selection of plants, water features, garden furniture, BBQ's, lawn products and all other gardening accessories. Granny Walsh's Coffee Shop is now open serving delicious food and freshly brewed Tea & Coffee. Free Convenient Parking. OPEN 7 DAYS..

Enniskillen

Belleek Living

T: +44 (0) 28 6632 8624

Erneside Shopping Centre | The Point | Derrychara | Enniskillen | BT74 6JQ | www.belleek.ie

Belleek Living (Enniskillen), renowned for its innovative and contemporary ranges has become one of the most popular giftware stores in Ireland. With a wide range consisting of giftware, tableware, crystal and the popular Belleek Living Jewellery you are sure to find something you like. Wedding lists and corporate sales available.



Enniskillen

Crannog Antiques

T: +44 (0) 28 6632 5850

Willoughby House | Willoughby Place | Enniskillen | BT74 7EX | M: 078 08878201 | E: evelynhassard@hotmail.com



Crannog Antiques is situated in the spacious rooms of a 19th Century townhouse opposite Portora Royal School Gates on the Belleek Road A46. This beautiful shop displays a wealth of interesting antiques including practical and decorative furniture, paintings, china and silver. Antique and Vintage Jewellery a speciality. Open Thurs, Fri & Sat from 10.30 to 5.30pm or by telephone appointment.

Enniskillen

Currency Xtra

www.currency-xtra.com

3 Eden Street | Enniskillen | BT74 7EG | T: +44 (0) 28 6632 7084

191 Main Street | Lisnaskea | BT92 0JE | T: +44 (0) 28 6772 3885 | E: info@currency-xtra.com



Foreign currency exchange, with best rates guaranteed, and Zero % commission. Conveniently located in the centre of Enniskillen, and also at Main St. Lisnaskea, we also offer International money transfers, and third party cheque cashing (T&Cs apply).

Opening hours Enniskillen: Mon to Fri 9am - 5.30pm, Sat. 9am - 4pm.

Opening hours Lisnaskea: Mon to Fri 9am - 5pm, Sat. 9am - 4pm.

Enniskillen

Craigville Garden Centre & Coffee Shop

T: +44 (0) 28 6632 6004

Sligo Road | Enniskillen | BT74 7JY



The newly paved Garden Centre comes well equipped with all your gardening needs including a wide range of shrubs, trees, pots, chemicals, bedding and plants throughout the year. Ornaments and topiary plants are also exclusive to our centre. our coffee shop, serves a wide range of homemade hot meals, drinks and snacks.

Enniskillen

Gowan Books

T: +44 (0) 28 6634 1239

Drumraw | Springfield | Enniskillen | BT74 8AS | E: shop@gowanbooks.com | www.gowanbooks.com



Gowan books is the book lover's paradise. 20,000 second hand and antiquarian books in stock. Nearly all subjects included but especially strong in Christianity, Irish Interest and antiquarian. Come and browse in one of Ireland's largest secondhand bookshops.

Open: Mon-Sat - 9am-7pm

Enniskillen

Erneside Shopping Centre

T: +44 (0) 28 6632 5705

The Point | Derrychara | Enniskillen | BT74 6JQ | www.ernesideshopping.com



Outlets include Next, Belleek Living Store, Costa Coffee, Semi-Chem, Holland & Barrett, Clinton Cards, Monsoon, Clarks, Claire's Accessories, H Samuel, Superdrug, Argos, Lifestyle, Harry Corry, New Look, DV8, River Island, Kodak Express, Quiz, Argento, Marks & Spencer. Poundland, Yankee Candles, Jamm, The Perfume Shop, Blue Inc, Carphone Warehouse, Therapy/Optilase, Lakeland, Trespass, Cara, JD Sports, T2 Photodome, Sky, Vodafone. **Open Mon, Tues, Wed & Sat 9am - 6pm. Open 9am - 9pm Thurs & Fri. Open Sun 1pm - 6pm**

Enniskillen
John J Sloan & Sons Ltd.

T: +44 (0) 28 6632 2363

15 High Street | Enniskillen | F: +44 (0) 28 6632 2533 | E: sloans.office@swiftsoft.net | www.sloansshoes.co.uk



Established in 1912 by John J Sloan. Celebrating 104 years we can still offer the widest selection of quality branded footwear in Enniskillen. We promise to satisfy the requirements of the most discerning customer. **Open:** Mon – Sat 9.00am – 5.45pm. Stocking ladies and gents quality brands like: Timberland, Barkers of London, Clarks, ECCO, Josef Seibel, Lotus, Gabor, UGG, Ara and Loake.



Enniskillen
GRAHAM-Enniskillen

T: +44 (0) 28 6632 2317

14 High Street | Enniskillen | E: menswear@graham-enniskillen.com | womenswear@graham-enniskillen.com



Exclusive collections for MEN & WOMEN from: Giorgio Armani, Ralph Lauren, Hugo Boss, Tommy Hilfiger, Ted Baker, Duchamp, Oliver Sweeney, Michael Kors, Circle of Gentlemen, Baumler, Barbour International and Magee.

Open; Monday - Saturday. 9.30am - 5.30pm.

www.graham-enniskillen.com

Enniskillen
Modellers Corner

T: +44 (0) 28 6632 2367

22 Darling St | Enniskillen | BT74 7EW | E: info@modellerscorner.co.uk | www.modellerscorner.co.uk



We carry a wide range of Radio Control Model Aeroplanes, Helicopters, Quadcopters, Cars and Boats. Model Railway's & Scenery. Die Cast Collectibles Cars, Bikes, Lorries & Planes. Also stocking a wide range of modelling materials such as Balsa, Plywood, Plasticard, Foamboard & Brass. Glues, Paints, Tools. Dolls House, Jigsaws & Kites.

Enniskillen | Irvinestown | Lisnaskea | Omagh
S.D Kells

T: +44 (0) 28 6632 2567

9 Church Street | Enniskillen | BT74 7DW | E: info@sdkells.co.uk | www.sdkells.co.uk



Long standing retailers of Menswear, Ladies fashion, Children's Wear and Household Goods. Extensive men's hirewear department catering for both weddings and formal occasions. Open: Monday-Saturday 9.00am-5.30pm. Also at Main St - Lisnaskea, Main St- Irvinestown and Scarffes Entry - Omagh.

Eating Out

Fermanagh is well renowned as a culinary destination, with a fantastic range of restaurants, pubs and cafes as well as local food produce and cookery schools. The tranquillity of the Fermanagh Countryside and magical Lough Erne lends itself as a back drop to many of our eateries making your dining experience just that bit extra special, and is also the inspiration to many of the wonderful dishes you will try while you're here.

If you've time why not try the Lough Erne Food Trail on board Erne Water Taxi or a dinner cruise on one of our waterbuses (page 14). Take in the beauty of Fermanagh while you dine and hear some interesting facts as to why our ancient islands and traditions have inspired our local produce and menus.



Clogher

The Carleton Restaurant at Corick House Hotel & Spa

T: +44 (0) 28 8554 8216

20 Corick Road, Clogher, Co Tyrone BT76 0BZ

E: reservations@corickcountryhouse.com | www.corickcountryhouse.com

Featuring a contemporary Irish European menu, directly influenced by the seasons and the exceptional produce of Ulster and the world beyond. Our chef and his amazing brigade of chefs deliver seasonal menus with their own interpretation of contemporary Irish cuisine, demonstrating a new, fresh approach to the Hotel's food offering. Overseen by the dynamic Mimi Chaban - world renowned Restaurant Manager and Maître d', recognised for his previous accolades of AA 2 Rosettes. An affordable selection of old world & new world wines, encompassing a connoisseur's corner with some of the finest wines in the world, is available! A culinary experience awaits you in the Carleton Restaurant. Complemented by the Blackwater Bar where the Bistro Menu is served throughout the day all year round.

Derrylin

Blake's

T: +44 (0) 28 6774 1020

Main Street | Derrylin | County Fermanagh | BT92 9LA | E: bbsbistroderrylin@yahoo.co.uk

A warm, friendly pub in the centre of Derrylin. Blake's spans three generations of this well-known local family. Food served 7 days per week from 12 noon to 6pm. A la carte served Wednesday-Saturday until 9pm. Winner of British Airways Tourism Award & Bushmills Pub of the year.

Ederney

Glendarragh Valley Inn

T/F: +44 (0) 28 6863 2777

9 Castlederg Road, Ederney, BT93 0AL

E: enquiries@glendarraghvalleyinn.com | www.glendarraghvalleyinn.com

Tasting is believing - Our licensed bistro serves food from 12 noon - 8.30pm daily. Experience modern Irish cuisine based on local ingredients. 3* Country Guesthouse on site offering comfortable and affordable accommodation - check our website for accommodation special offers.

Enniskillen

Blake's of the Hollow

T: +44 (0) 28 6632 2143

6 Church Street, Enniskillen, BT74 7EJ | E: pat@patrickblakegroup.com

"If Irish pubs were churches, Blake's of 'The Hollow' would be the cathedral of them all" - American travel writer. Enjoy a drink in the Atrium, a magnificent gothic bar split over two floors. The original Victorian bar remains untouched since 1887.

Enniskillen

Becketts At The Enniskillen Hotel

T: +44 (0) 28 6632 1177

72 Forthill Street | Enniskillen | BT74 6AJ | E: info@enniskillenhotel.com | www.enniskillenhotel.com

'Laughter is brightest where the food is best' is the motto at Becketts Grill. We specialize in char-grilled steaks and you can expect only the finest local produce cooked to your liking. After all, there is more than one way to enjoy the blue lakes and green fields of Fermanagh, and you'll find it all here on a plate. Enjoy! Restaurant. Seats 70. Private dining available upon request.

Enniskillen

Belleek Restaurant @ Manor House Country Hotel

T: +44 (0) 28 6862 2200

Killadeas | Enniskillen | E: info@manorhousecountryhotel.com | W: www.manorhousecountryhotel.com

Belleek Restaurant is a relaxed fine dining experience, the ornate interior with its high ceilings, fabulous wall corning detail and stunning views of Lough Erne exude a tranquil and inviting ambience. Awarded Two AA Rosettes for culinary excellence, our Executive Chef has created a delicious menu, demonstrating his skill and commitment to using the freshest local produce which is complimented by an impressive wine selection. Belleek Restaurant provides high quality service complimented by a warm Fermanagh welcome and the stunning backdrop of Lough Erne and the Marina make Belleek Restaurant the perfect place to enjoy a relaxed fine dining experience with friends and family, we look forward to welcoming you.

Enniskillen

Cellar Door Bar & Bistro @ Manor House Country Hotel

T: +44 (0) 28 6862 2200

Killadeas | Enniskillen | E: info@manorhousecountryhotel.com | www.manorhousecountryhotel.com

Renowned for its homely ambience, Cellar Door Bar offers a casual dining environment, with lounge seating, open fires and a warm Fermanagh welcome. The all-day menu features a classic mix of tasty dishes featuring the very best of local produce. Locals and guests alike to unwind and enjoy the weekend entertainment by a live Band, which adds to the jovial atmosphere. Cellar Door Bistro captures the old world charm of the original Manor House Building, with its traditional cottage style walls and vaulted ceiling. It offers a casual style of dining with an extensive all day menu which is also served in Cellar Door Bar. It is ideal for private parties for Lunch or Dinner, to celebrate birthdays, christenings or a family get together! (Advance booking is essential for private parties)

Enniskillen

Bush Deli & Bistro

T: +44 (0) 28 6632 5210

26 Townhall St | Enniskillen | BT74 7BR | E: info@thebushbar.com | www.thebushbar.com

At the Bush Deli & Bistro we offer a unique collection of cocktails, premium spirits and beers. We also offer a modern taste of food designed for every palate. We have recently introduced a Deli Counter with a wide range of homemade desserts and snacks plus a range of specialists Tea's and Coffee's. Food served from 8.00am til 9.00pm. With a wide range of entertainment including live rock bands and cover bands.

Enniskillen

Café Merlot/Restaurant No.6

T: +44 (0) 28 66320918 | www.cafemerlot.co.uk

6, Church Street | Enniskillen | Co.Fermanagh | BT74 7EJ | E: russellanddonnelly@gmail.com

Café Merlot offers an extraordinary fine dining experience in the heart of Enniskillen. Nestled alongside the well known traditional bar Blakes of The Hollow. Cafe Merlot is open for lunch and dinner every day. It is rated one of the top restaurants in Ireland, Best Gastro Pub Ulster, Restaurant of the Year and Best Wine Experience Ulster. The award winning chef serves up modern cuisine giving classic dishes a global twist.

Enniskillen

Charlie's Bar

T: +44 (0) 28 6632 5303

1 Church St | Enniskillen | County Fermanagh | BT74 7DW

Charlie's is a family run bar since 1944. A traditional old pub with open fire, off-sales and late bar every night. Sloopy's Disco is open every Sat night - free of charge. Live sports and racing on 8 plasma screens. Live music every Saturday night.

Enniskillen

Crowe's Nest

T: +44 (0) 28 6632 5252

12 High Street | Enniskillen | BT74 7EH

One of the oldest pubs in Enniskillen situated in the heart of the main shopping area and a popular pub amongst the locals and visitors alike. Varied menus, food served from 10am until 7pm. Weekly entertainment in the main bar or dance the night away in our Thatch Night Club.



Enniskillen
Dollakis

T: +44 (0) 28 66 342616

28 Cross Street | Enniskillen | BT74 7DX | E: info@dollakis.com | www.dollakis.com

Dollakis Greek Restaurant open Tues - Sat 12 - 3.00pm for lunch and 5.00pm - 9.30pm Mezze & A La Carte.

Enniskillen
Devenish Bar & Lounge

T: +44(0)28 6632 5350

24-28 Darling Street | Enniskillen | Co. Fermanagh | BT74 7EW | devenishbar@rocketmail.com
www.devenishbar.com | [f](https://www.facebook.com/devenishbar) [devenishbar](https://www.facebook.com/devenishbar) or [devenishlounge.enniskillen](https://www.facebook.com/devenishlounge.enniskillen)

Offering fantastic food, world-class cocktails and one of the finest premium spirits selections in the country as well as live weekly entertainment and select ticket-only themed nights. Substantial cocktail menu and a team of mixologists that prepare and make all their own syrups, purees, garnishes and cordials. We pride ourselves in presenting good food daily using the very best of local produce and offering great value for money. An ideal venue for any occasion, The Devenish Lounge is also available for private hire to make that important night extra special. Our experienced staff look forward to welcoming all customers and assure you of an experience you will enjoy.

Enniskillen
Franco's Restaurant

T: +44 (0) 28 6632 4424

Queen Elizabeth Rd | Enniskillen | BT74 7DY | E: francos@btconnect.com | www.francosrestaurant.co.uk

Specialities: mussels, crab, seafood, pasta, pizza, salads, chicken and steaks (wide choice). Pre-booking advised at weekends but not essential. Open: Monday - Sunday, noon - 11.00pm. Early bird menu also available. Euro accepted. Licensed.

Enniskillen

Horseshoe/Saddlers Restaurant & Wine Bar

T: +44 (0) 28 6632 6223 | F: +44 (0) 28 6632 2228

66 Belmore Street | Enniskillen BT74 6AA | E: info@horseshoeandsaddlers.com | www.horseshoeandsaddlers.com

A la carte, Lunch and tea time specials every day. Early bird menu also available. Fully Licensed, Child friendly. New conference facilities now available. We also cater for outside functions. All major credit cards accepted. Open: 10am - 11pm every day.

Enniskillen

Kamal Mahal Indian Restaurant

T: +44 (0) 28 6632 5045

1 Water Street | Enniskillen | Co. Fermanagh | BT74 7DY | E: info@kamalmahal.co.uk | www.kamalmahal.co.uk

Kamal Mahal Indian Restaurant is situated in the heart of the town of Enniskillen, with its traditional Indian themed restaurant this really is a taste of India. The friendly staff and welcoming atmosphere is what brings back customers time and time again. The top class high quality cuisine is prepared by highly skilled and qualified Indian chefs under expert guidance from Kamal himself, treating you to a special dining experience every time.

Enniskillen

Kove Restaurant @ Killyhevlin Lakeside Hotel

T: +44 (0) 28 6632 3481

Enniskillen | BT74 6RW | E: info@killyhevlin.com | www.killyhevlin.com

Kove @ Killyhevlin Lakeside Hotel is one of Enniskillen's newest restaurants designed for you and me. As a member of Taste of Ulster, we can assure quality fresh local produce, savoured with iconic drinks to enhance your dining experience. Kove is the ideal venue for all occasions, offering excellence in hospitality to both resident and non-resident diners. We look forward to being your host. Advanced reservations advised.



This very unique setting offers something special both as a culinary destination and simply a luxurious getaway spot. A place to unwind and enjoy a glass of some of the very best wines that France and the world have to offer.

Relax on the shore of Lough Erne just meters away with a master chef and his team on hand to create something special. Watermill Lodge offers fine dining by renowned chef Pascal Brissaud (formerly of Manor Park, Armagh). Be our guest... Enjoy a pint or a gin and tonic in our lounge with stunning views across Lough Erne before choosing from our "early bird" or "a la Carte" menus, Irish cuisine with a "French twist". Join us... Every Sunday for all-day dining, specialising in traditional



"Irish Sunday Roast". Enjoy a leisurely stroll around our mature water gardens on the banks of Lough Erne and watch the sun go down with an after-dinner Digestif, Cognac, Armagnac, Calvados or any liqueur of your choice.

Opening hours are Wed to Fri 5pm last booking 9.30pm / Sat 12 noon to 3pm 5pm to 10pm / Sun 12 noon to 8pm

**Kilmore Quay
Lisnaskea BT92 0DT
T: +44 (0) 28 6772 4369
E: water.lodge@yahoo.com
www.watermillrestaurantfermanagh.com**

The Horseshoe & Saddlers



- Food served Daily 11am -11pm.
- Outside catering throughout the Fermanagh.
- Early Bird Menu & Sunday Carvery.
- Weddings, Christenings & Funeral food.
- Private function room for meetings or dining.

AWARD WINNING BISTRO, BAR AND EVENT CATERING



www.horseshoeandsaddlers.com | t: 02866326223 | e: info@horseshoeandsaddlers.com

Enniskillen

Little Wing

T: +44 (0) 28 6632 0834

23-25 High Street | Enniskillen | BT74 7DQ | E: hello@littlewingspizzeria.com | www.littlewingspizzeria.com

At Little Wing we couldn't be more passionate about our pizza – just taste one of our yummy, traditionally made Naples style pizzas and you'll know what we're talking about. We tirelessly search for the finest fresh ingredients which we cook using time honoured methods, all served in a warm and friendly atmosphere for the whole family to enjoy! **Open: 11am- 10pm Monday- Sunday**

Enniskillen

The Meadow

T: +44 (0) 28 6622 8618

Unit 2 | Castle Island Court | Broadmeadow Place | Enniskillen | Co. Fermanagh | BT74 7HR
facebook.com/themeadowenniskillen

The Meadow is Fermanagh's newest edition to the fine dining scene. Located in the heart of Enniskillen, The Meadow prides itself on using local produce to create delicious meals at a fantastic price suitable for everyone!

Enniskillen

Pat's Bar & Grill

T: +44 (0) 28 6632 7462

1-5 Townhall Street | Enniskillen | BT74 7BD || E: info@patsbar.co.uk | www.patsbar.co.uk

Pat's Bar & Grill incorporating the Galaxy Disco Bar is centrally located on "THE DIAMOND" in the heart of the town. Open from 10am serving breakfast and closing at 1am providing late bars and live music, Pat's has it all. Daily lunch specials include roast dinners, fresh fish, homemade pies and much much more. We look forward to serving you in our family run bar and restaurant.



fermanaghlakelands.com



[#fermanaghlakelands](https://facebook.com/#fermanaghlakelands)



[@fermanaghlakes](https://twitter.com/fermanaghlakes)



Enniskillen - The 4* Westville Boutique Hotel

The Terrace Restaurant

T: (028) 6632 0333

14-20 Tempo Road | Enniskillen | BT74 6HR | E: reception@westvillehotel.com | www.westvillehotel.com

Relax and enjoy contemporary dining with a twist served in The Terrace Restaurant, the best of modern cuisine in chic surroundings. Run by one of the finest young Chefs in Ireland, Gavin Cassidy, the Terrace has a sleek open planned kitchen dominating the restaurant, adopted to add an element of theatre to your dining experience. Open Friday & Saturday from 6pm, Sunday Lunch from 12noon til 4pm. Also available for private functions.

Enniskillen

The TapHouse

T: +44 (0)286634 6800

46 Old Tempo Rd | Enniskillen | Fermanagh | BT74 4RR | www.thetaphouseenniskillen.com

The TapHouse is Fermanagh's newest 'Gastro-Pub'. With a passion for top-quality, down-to-earth, great value food and a commitment to everything local, we are proud to offer a warm and inviting drinking and dining experience. Situated in the leafy suburbs of Enniskillen, we uniquely offer ample on-site parking and a cosy yet sophisticated atmosphere suitable for any occasion. Call in, we have saved you a seat!

Irvinestown

Mahons Hotel Bar & Restaurant

T: +44 (0) 28 6862 1656

Main Street | Irvinestown | E: info@mahonshotel.co.uk | www.mahonshotel.co.uk

Food served all day: Carvery served Sunday 12.00-3.00p.m, Bar lunches daily 12.00-4.00pm. Wide selection of food available including daily specials. Locally sourced produce including beef and salmon. Extensive wine list. Entertainment every weekend. Private Car Park.

Florence Court

Tully Mill Restaurant

T: +44 (0)28 6634 9879

Tully Mill | Mill Rd | Florence Court | Co. Fermanagh | E: info@tullymill.com | www.tullymill.com

One of Fermanagh's hidden gems, Tully Mill Restaurant is located on the edge of the Florence Court estate, a mere 15 minutes from Enniskillen town centre. Soak up the warm and relaxing atmosphere in this lovingly restored mill and take your pick from our extensive locally sourced menus, whether it be for an evening of fine dining or a hearty portion of our Sunday roast. Please contact us by phone or email to check our current opening hours, as these will change seasonally.

Kesh

Lusty Beg Island Restaurant

T: +44 (0) 28 6863 3300

Boa Island | Kesh | E: info@lustybegisland.com | www.lustybegisland.com

Specialities: bar food, local Irish fare. Wide choice available. Prebooking advised to avoid disappointment. Open 1pm - 9pm during peak times (times may vary due to private functions especially at weekends). For off peak season opening times, please telephone ahead. Licensed.

Lisbellaw

Carrybridge Lakeside Lodge

T: +44 (0) 28 6638 7148

33 Inishmore Road | Lisbellaw | BT94 5NF | E: carrybridgelakesidelodge@gmail.com

Relax and unwind on the shores of Lough Erne. With an array of dishes to tempt the palate: Gastro Pub menu available Mon - Sun 12pm - 9pm & Sat 12pm - 10pm, Sun Carvery 12pm - 3pm featuring chefs specials. Sunday lunches, BBQ's & private parties all catered.

Lisnaskea

Watermill Lodge Restaurant

T: +44 (0) 28 6772 4369

Kilmore Quay | Lisnaskea | BT92 0DT | E: water.lodge@yahoo.com | www.watermillrestaurantfermanagh.com

A warm & friendly restaurant located on the shore of Lough Erne, spectacular views, high standard cuisine, lobster, scallops, Angus beef & local produce. Lough Erne fish species displayed in our 50,000 litre aquarium. Have a stroll through our water gardens. Accommodation available.

MAHONS' HOTEL

IRVINESTOWN | CO. FERMANAGH | NORTHERN IRELAND

You are welcome to Fermanagh and to Mahon's Hotel, established in 1883 and serving meals for over 130 years.

Bar Lunches ~ Meals Served All Day ~ Children's Menu ~ Early Bird Menu, Mon- Sat
Restaurant Open Daily ~ Last Orders 9.30pm

Top Entertainment Every Weekend in Bar
Games Room Carvery Lunch Every Sunday 12 noon - 3pm

Weekend & midweek Breaks
Available from £69.00 p.p.s



Coming by boat? We'll lift you at Castle Archdale

Tel: +44 (0)28 6862 1656 | Fax: +44 (0)28 6862 8344 | www.mahonhotels.co.uk
or call in and sample 'Real Fermanagh Hospitality'



fermanaghlakelands.com



#fermanaghlakelands



@fermanaghlakes



SILVERBIRCH
HOTEL • OMAGH

Award winning family owned Hotel nestled in the heart of Co. Tyrone, in the bustling market town of Omagh on the footsteps of the regions famed Sperrin Mountains and Gortin Lakes.



DISCOVER TYRONE & SPERRINS

with lots to see & do nearby - Ulster American Folk Park, Gortin Forest Park, An Cragan & Sperrin Mountains.

10 CONFERENCE & EVENT SPACES

featuring
Business Centre,
Drumragh Suite & Lola's



FOOD & DRINK

Barretta Bar & Grill or Bertha's Bar
Enjoy Lunch, Dinner, Afternoon Tea
& Weekend Live Entertainment



Book online: www.silverbirchhotel.com | E. reservations@silverbirchhotel.com
T: +44 (0)28 8224 2520 | 5 Gortin Road | Omagh | BT79 7DH



Enniskillen Castle

Museums | Visitor Information | Heritage Gateway

Enniskillen Castle is open all year round.

Monday - Friday: 9.30am - 5.00pm

Saturday: 11.00am - 5.00pm.

Jun - Sept, Sunday: 11.00am - 5.00pm

Enniskillen Castle, situated beside the River Erne in County Fermanagh, was built almost 600 years ago by the ruling Gaelic Maguires. The historic site houses two museums, Fermanagh County Museum and The Inniskillings Museum. The Enniskillen Castle complex recently underwent a £3.5m development. New facilities include seven new galleries, genealogy centre, tourist information, discovery space with panoramic views, cafe and shop.



Fermanagh & Omagh
District Council
Comhairle Ceantair
Fhear Manach agus na hÓmaí



Enniskillen, Co Fermanagh



+44 (0) 28 6632 5000



EnniskillenCastle



@ecmfcm



enniskillencastle.co.uk



fvic@fermanaghomagh.com

Cafes & Fast Food

Belleek

Thatch Coffee Shop

T: +44 (0) 28 6865 8181

20 Main Street | Belleek | E: belleekcountrycottages@yahoo.co.uk | www.belleekcottages.com

Listed historic building – only original thatched building in any town or village in County Fermanagh. 'Old World' atmosphere. Specialities: delicious home baking, scones, cakes, soups, espresso and cappuccino available. Open Monday - Saturday 9.00am - 5.00pm. (Unlicensed).

Enniskillen

The Jolly Sandwich Bar

T: +44 (0) 28 6632 2277



3 Church Street | Enniskillen | BT74 7EJ | www.thebestof.co.uk/enniskillen

A choice from over 30 delicious fillings served in a variety of breads - ciabatta baguette, granary, hot food selection, soups, coffee, cappuccino, latte, mocha & smoothies. Open Monday - Saturday 8am - 4.00pm. Suitable for wheelchair users. 'Well worth a visit.' Award winners 'Best in UK'. Taste of Ulster Member

Enniskillen

Leslie's Home Bakery and Coffee Shop

T: +44 (0) 28 6632 4902

10 Church Street | Enniskillen | BT74 7EJ

Specialities: home baking, lunch specials such as lasagne and hot pies, salads and cakes. A wide choice of delights available. Open Monday - Friday 8am - 5.30pm Saturday 8am - 6pm. Unlicensed.

Enniskillen

Flo's Restaurant

T: (028) 6632 6880

15 Townhall St | Enniskillen | Co. Fermanagh | BT74 7BE | E: flosrestaurant@hotmail.co.uk

Flo's Restaurant in Enniskillen Town Centre. Flo's specialities include scones, pastries, tray bakes, crumbles, tarts, bread and butter pudding and meringues as well as a variety of daily specials. They also serve a wide variety of healthy options as well as special dietary requirements (gluten free, diabetes, etc.).

Florencecourt/Enniskillen

Florence Court & Castle Coole Tearooms

T: +44 (0) 28 6634 9879

Florence Court & Castle Coole | Co. Fermanagh | E: info@nifoods.com | www.nifoods.com

Pay a visit to Florence Court or Castle Coole, two of Fermanagh's stunning National Trust properties, and take advantage of their delicious tearooms. Whether you're looking for a relaxing cup of coffee, a scrumptious homemade cake or a light lunch, we have plenty to offer.

Enniskillen

Kenny's Take-Away/Sit In

T: +44 (0) 28 6632 3376

10 Forthill Street | Enniskillen | BT74 6AJ (Opposite Dunnes)

Established for over 25 years. Supplying fresh fish and chips cut and prepared on the premises. Burger range, chicken etc. Children's menu. Opening Hours Mon-Sat 10.30am - 10.30pm orders also taken by telephone. Delivery service available. Located opposite Dunnes Stores.

Lisnaskea

The Kissin Crust

T: +44 (0) 28 6772 2678

125 Main Street | Lisnaskea | Co. Fermanagh | BT92 0JE

Ideally situated when on route to Upper Lough Erne, the Shannon Erne Waterway and Crom Estate. Stop off for a coffee – delicious cappuccino – home made scones – sandwiches prepared with the tastiest fillings to eat in or take away – traybakes – lunches. Open 8.30am-5.00pm.



Speciality Foods

Enniskillen
Stewart's Butchers

T: +44(0)28 6632 2413

26 Church St | Enniskillen | Co. Fermanagh | BT74 7EJ | E: info@stewartsbutchers.com | www.stewartsbutchers.com



Third Generation Butchers and Delicatessen. Stewart's is a family run business, famous for its extensive range and the quality of locally sourced meats, its fresh salads and ready to go home-made cuisine. Great produce, service and a friendly welcome has allowed Stewart's Butchers to win a host of prestigious business awards over the years including the UK Best Butchers Shop title. All fresh meats are prepared by craft butchers working at the blocks on their cuts in view of the customer using traditional methods. Pop in to see for yourself.

Enniskillen
Fermanagh Black Bacon

T: +44 (0) 28 6632 2152

O'Doherty's Meats, 3 Belmore St | Enniskillen | BT74 6AA | E: mail@blackbacon.com | www.blackbacon.com



Award winning specialist meat retailer and wholesaler. Inventor of the famous Fermanagh Black Bacon - a local bacon delicacy. Three times All Ireland Burger Champion. O'Doherty's keep their own herd of pigs living freely on Inishcorkish Island on Upper Lough Erne. Visits to the island by appointment. Winner of UK Burger of The Year.

Cookery Schools

Lisbellaw
Belle Isle School of Cookery

T: +44 (0) 28 6638 7231

Belle Isle Estate | Lisbellaw | E: info@belle-isle.com | www.belle-isle.com



Belle Isle has the perfect ingredients for embarking on a culinary adventure in one of the most beautiful settings, on a private island location in the Fermanagh Lakelands. We offer bespoke cookery courses, demonstrations and dining experiences for groups of eight or more. So whether your group is looking for a fun day out, a corporate team building event or entertaining, please contact us and we will organise the perfect Cookery experience. Combine with a stay at the Belle Isle Castle & Private Island, offering a choice of accommodation, either at the 4* Self-catered Courtyard Apartments and Cottages or the ultimate experience of Irish Castle grandeur at Belle Isle Castle. Prices on request.

Tourist Services

think6 Marketing Solutions

T: +44 (0) 2868 659 759 | T: +44 (0) 2868 659 131 | M: 07962409131



**Creative
Marketing
for You**

16a Main Street | Belleek | BT93 3FX | www.think6.co.uk - Creative Marketing for You

think6 Marketing Solutions are a creative, innovative marketing consultancy and training agency based in Belleek. Headed up by Teresa O'Loughlin, this marketing agency is the perfect solution to your marketing requirements.

With an ethos built on knowledge sharing and empowerment, think6 provides small and medium sized businesses with the practical solutions that can make a real difference to their business. With experience in hospitality, tourism and SME development and growth, think6 can offer a wide variety of marketing support services as well as mentoring and coaching. Don't think about it, think6 it!

Lisnaskea Community & Tourism Group

T/F: +44 (0) 28 6772 1081

Lisnaskea Business Complex | Drumbrughas North | Lisnaskea | BT92 0LT
E: lisnaskea.bus.co@btconnect.com | www.visitlisnaskea.co.uk

Lisnaskea Community and Tourism Group is an umbrella organisation for the majority of the community groups and clubs in Lisnaskea and provides a forum for discussion of relevant issues. The aims of the group are to forge stronger links between community groups and improve facilities.

The Print Factory

T: +44 (0) 28 6632 6960 | T: 048 6632 6960 (ROI)

Lackaghboy Ind. Estate | Tempo Rd | Enniskillen | BT74 4RL | E: info@theprintfactory.com | www.theprintfactory.com

The Print Factory (Acos Design) are one of the leading design companies and litho printers in Ireland. As a family-run company we have provided quality design and print for over a quarter of a century. We have considerable experience in the creation of artwork and quality litho printing. Our unique one-stop approach ensures our clients get the convenience and added value of complete support under one roof from a team of dedicated specialists. Whether your requirement is simply for disk-checking, concept design or printing, The Print Factory would be delighted to have the opportunity to promote your business. The Print Factory - your complete Design, Print, Promote Service.



Rainey & Associates

Chartered Accountants & Registered Auditors

**6 East Bridge Street, Enniskillen
Co Fermanagh BT74 7BT**













**A Local Firm providing
Friendly, Efficient
& Professional Service**

Tel: 028 6632 3807 E: ken@raineyandassociates.co.uk | raineyandassociates.co.uk



Fermanagh Map

KEY

- | | |
|---|---|
|  Activity Centre |  Historical Place |
|  The UlsterWay - Quality Section |  Viewpoint |
|  The UlsterWay - Non-Quality Section |  Golf Course |
|  Kingfisher Cycle Trail/North West Trail |  Caravan Park |
|  Horse Riding |  Cruiser Hire Base |
|  Youth Hostel |  Visitor Information |



Transport

Donnelly Bros Car & Van Hire



One of the leading motor groups in Northern Ireland, working with over 18 manufacturers. As well as car and van sales we also offer a rental service where you can select from a wide range of vehicles at very competitive prices.

101 Irvinestown Road | Enniskillen | BT74 6DN
T: +44 (0) 28 6632 297 | www.donnellygroup.co.uk

Flexi Cabs



24 Hour taxi service for all your taxi needs. Local runs, airport and contract runs on request. Distance no object. 8 seater vehicle available. Large fleet of vehicles also available.

3, Castle Street | Enniskillen | BT74 7HH | T: 0800 654321 | T: +44 (0) 28 6632 4848
M: 07544424848 (Free Phone for O2 Mobile Users)

Lakeland Tours



Fermanagh's premier coach company operating a fleet of modern executive coaches ranging from 7 up to 53 seats. We also operate a programme of day trips and coach tours. Office hours: Mon-Fri 9.30am-5.00pm. "Lakeland Tours - Quality in Motion"

Enniskillen Airport, Trory, Enniskillen, BT94 2FH
T: +44 (0) 28 6632 9900 | info@lakelandtours.co.uk | www.lakelandtours.co.uk

Translink/Ulsterbus



Ulsterbus Enquires: T+44 (0) 28 9066 6630. Available 7 days a week.
Open: Monday-Friday 9am-5pm. Buses travelling to and from Belfast, Derry, Dublin, Sligo and all major towns and villages throughout Ireland. Private hire also available.

Wellington Road | Enniskillen | BT74 7EF | T: +44 (0) 28 6632 2633
www.translink.co.uk



FOX ADVERTISING

MEDIA SOLUTIONS

Tourism & Hospitality Advertising Specialists
1 Union Buildings, Union Place, Dungannon, Co. Tyrone, BT70 1DL

Tel: (028) 8772 2962

email: martin@fox-advertising.com

Enniskillen Castle

Museums | Visitor Information | Heritage Gateway



Enniskillen Castle, situated beside the River Erne in County Fermanagh, was built almost 600 years ago by the ruling Gaelic Maguires. The historic site houses two museums, Fermanagh County Museum and The Inniskillings Museum. The Enniskillen Castle complex recently underwent a £3.5m development. New facilities include seven new galleries, genealogy centre, tourist information, discovery space with panoramic views, cafe and shop.

ENNISKILLEN CASTLE IS OPEN ALL YEAR ROUND

Monday - Friday 9.30am - 5pm
and Saturday 11am - 5pm.

June - September,
Sunday 11.00 - 5.00pm



Fermanagh & Omagh
District Council
Comhairle Ceantair
Fhear Manach agus na hÓmaí

📍 Enniskillen, Co Fermanagh
☎ +44 (0) 28 6632 5000
📱 EnniskillenCastle
🐦 @ecmfcm
💻 enniskillencastle.co.uk

Belleek Pottery Visitor Centre



160 Years of History.. be sure to visit !

Visitor Centre
Rose Isle Garden
Guided Pottery Tours
Visitor Participation
Restaurant & Tea Rooms
Belleek Retail Showroom
Museum & Audiovisual Theatre
Open All Year | Kids Go Free



To commemorate our 160 year anniversary, Belleek have launched the 'Belleek Archive Collection'. This is a collection of 16 pieces of Belleek, representing the sixteen decades of design & craftsmanship. Each piece takes you on a journey through the years, each having a unique 2017-anniversary backstamp.



Belleek Pottery Visitor Centre | Belleek | Co.Fermanagh | BT93 3FY
Tel: +44(0)28 686 59300/ Tel: +44(0)28 686 58501
Email: takethetour@belleek.ie | Web: www.belleekpottery.ie



Belleek
FINE PAIRIAN CHINA